

Historic, Archive Document

Do not assume content reflects current scientific knowledge, policies, or practices.

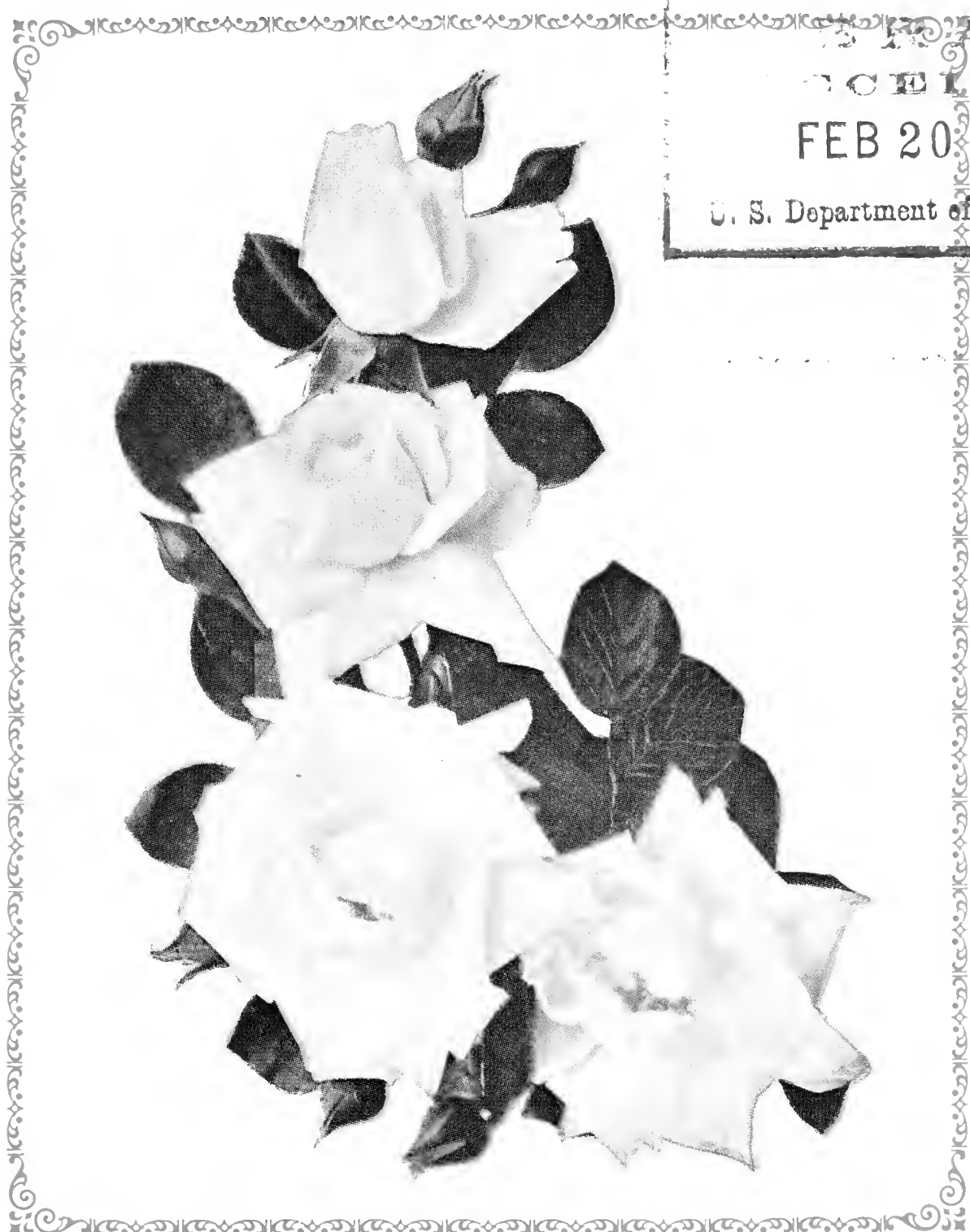
6-61

STERLING'S

1937 Catalog

1873  1937

RECEIVED
FEB 20 1937 ★
U. S. Department of Agriculture.



THE NEW DAWN ROSE

Patent No. 1. \$1.50 Each. See page 35.

RALPH W. STERLING
CUTCHOQUE

SUFFOLK COUNTY

LONG ISLAND

NEW YORK

Telephone Peconic 55

Cutchogue, L. I., N. Y., January 25, 1937

TO MY FRIENDS AND CUSTOMERS:

Please accept this, my catalog for season of 1937 with my best wishes for the New Year and with thanks for your much appreciated patronage of last year.

We do appreciate your confidence in us and assure you that we will do everything possible to deserve it in the future. Wishing you and yours a Happy, Prosperous and Successful Year.

Yours sincerely,

RALPH W. STERLING.

DIRECTIONS

By carefully reading and observing the following directions, mistakes will be largely avoided.

Please use the enclosed Order Sheet and self-addressed envelope if possible. If you need more let me know and I will be glad to send more to you.

Write your name, address and shipping directions plainly.

Always send the cash with your order, unless otherwise agreed upon. Money may be sent by P. O. Money Order, Bank Draft or Registered Letter. Stamps may be sent for amounts under \$1.00, but be sure to put in three-cent stamps, wrapped in waxed paper.

We pay the postage on all seeds sold by the pkt., oz., and $\frac{1}{4}$ lb. Quantities over that are priced net, to be shipped by Parcel Post, freight or express, at purchaser's expense, unless otherwise stated.

If you desire your seed sent by Parcel Post, add 8c for the first lb. and 1c for each additional lb. of your order, allowing 2 lbs. extra for package. For amount of postage on plants see Plant Department. These rates are for anywhere on Long Island.

By pricing my seeds net, postage extra, you get your seeds delivered for less money than if I quoted a Postpaid price as the 8c per lb. extra would have to be counted in and added to each single lb. priced.

$\frac{1}{2}$ lbs. will be sold at lb. rates; $\frac{1}{2}$ bu. at bushel rates.

No charge is made for packing or packages.

NOTE:—In all orders received before April 1st we include trial packets of different kinds of seed, the number of packets depending upon the size of your order. If you find any of these of particular value we would be pleased to hear of it.

If you cannot use this catalog or receive more than one will you kindly pass it on to someone interested. Thank you.

NOTICE—I do not warrant in any way, express or implied, the description, quality, productiveness, or any other matter pertaining to any seeds, bulbs, plants, shrubs or trees sold by me, and I will not be in any way responsible for the crop.

However, all complaints are carefully looked into and I try to adjust them satisfactorily to all.

SEED DEPARTMENT

"Burpee's Seeds grow and are the best that grow." We carry Burpee's Garden and Flower Seeds and you can purchase them from us as reasonable as you can get them elsewhere.

"STERLING STRAIN"

Follow the mark of "Sterling". We are always looking for the best strains of seed and where we find a superior one we place the sign of "Sterling" on it thus [S]. All other seeds listed are direct from Burpee unless otherwise noted.

ASPARAGUS SEED

MARY WASHINGTON. Re-selected, Pedigreed Seed. The only kind of asparagus to raise. Blight proof, of highest quality and heaviest yield. Pkt., 10c; 1 Oz., 20c; ¼ Lb., 75c; Lb., \$2.50. Postpaid.

We have Mary Washington, 1 year old roots, for sale this Spring, grown from Re-selected Seed.

See page 46 for prices on Asparagus Roots.

BUSH BEANS — GREEN POD

2 lbs. make 1 qt. 1 lb. will plant 100 feet of drill.

1 bu. will plant 1 acre in hills.

No.	Pkt. Lb. 15 Lbs. 60 Lbs.			
	Pkt.	Lb.	15 Lbs.	60 Lbs.
10 BURPEE'S STRINGLESS GREEN POD. New improved long pod strain (S) ..	\$.10	\$.25	\$2.25	\$ 8.00
16 TENDERGREEN. Imp. Full Measure (S)	.10	.25	2.25	8.00
17 BOUNTIFUL. Best for market. (S)....	.10	.20	2.00	7.80
21 BLACK VALENTINE. Stringless. (S)	.10	.20	2.00	7.80
26 DWARF HORTICULTURAL. Stringless. Red Podded10	.25	2.50	10.00
25 ROBUST PEA BEAN. For baking10	.20	2.00	
28 RED KIDNEY. Very rich. For baking.	.10	.20	2.25	
29 WHITE MARROFAT. Medium sized...	.10	.20	2.25	
30 WHITE KIDNEY. Long. For baking ..	.10	.20	2.25	
69 BROAD WINDSOR ENGLISH FAVA BEANS. Plant very early for market	.10	.25	3.00	11.00

All the above prices by the lb. are net, postage extra. See page 1 as to postal rates. Pkts. are postpaid. ½ lb. at lb. rates, ½ pk. at pk. rates, ½ bu. at bu. rates.

Southold, L. I.,
July 18th, 1936.

From 15 lbs. of your Sure Crop Black Wax Beans, we shipped 112 hampers of beans and cleared home \$68.89 after paying for hampers. We picked the beans over eight times.

GEO. NAWROSKI.



Picking Fordhook Bush Limas at John Simcik's

BUSH BEANS — WAX POD

No.		Pkt.	Lb.	Pk. of 15 Lbs.	Bu. of 60 Lbs.
35	BRITTLE WAX (S). Quality. Stringless	\$.10	\$.25	\$2.50	\$ 8.50
41	RUST PROOF GOLDEN WAX. Flat pods, tender, stringless. Early	.10	.25	2.50	10.00
36	SURECROP STRINGLESS WAX (S). The best for market. Extra long, straight pods. Very prolific	.10	.25	2.25	8.00

POLE BEANS

1 Lb. will plant 100 poles.

No.		Pkt.	Lb.
72	KENTUCKY WONDER or OLD HOMESTEAD. Long green pods. Extra quality, tender and fine	\$.10	\$.25
79	GOLDEN CLUSTER WAX. Sweet, tasty	.10	.25
80	YARD LONG. New, extra fine	.15	.55

POLE LIMA BEANS

1 lb. will plant 50 poles.

No.		Pkt.	Lb.	2 Lbs.
105	BURPEE'S BEST. New, early. A Pole Fordhook	\$.15	\$.50	
95	BURPEE'S NEW SUNNYBROOK. Early	.10	.35	\$.65
98	GIANT PODDED. Very large	.10	.35	.65

Southold, L. I.,
Jan. 12th, 1937.

We tried your Fordhook Bush Limas last year and liked them very much. You may book us for 4 bus. Sterling Strain Fordhooks for this year.

MOFFAT BROS.

BUSH LIMA BEANS

We have always delivered 100 per cent on our orders for Fordhook Bush Limas. Order early and be sure of your Fordhooks. Prices quoted are net cash. Time price, \$.50 per bu. extra. Price liable to change without notice. My Grower reports germination test of 94% and a short crop.

1 lb. will plant 100 ft. in hills or 50 ft. in drill.

No.		Pkt.	Lb.	Pk. of 15 Lbs.	Bu. of 60 Lbs.
61	FORDHOOKS (S). Best for table and market. Large, early. Fine stock	\$.10	\$.25	\$3.00	\$10.00
65	FORDHOOKS from Burpee, an extra choice strain from the originator15	.30	3.25	11.50
63	BURPEE IMPROVED (S). Flat, large	.10	.30	3.50	11.00
64	DREER'S BUSH LIMA. Late, prolific (S)10	.30	3.50	12.00
68	WOOD'S PROLIFIC. Small, early10	.25	3.00	

Use Magnesium Arsenate for Bean Beetle. 4 lbs. to 100 gals. water, with 1 lb. Kayso. See page 50.

BEETS — TABLE

1 oz. will sow 50 feet of drill. 1 lb. will sow 80 to 100 rods.

	Pkt.	Oz.	¼ Lb.	Lb.
119 EARLY WONDER (S). Earliest, fine quality, dark red. Best for home use.	\$.05	\$.15	\$.40	\$.90
118 DARK RED EGYPTIAN (S). Extra dark	.05	.15	.40	1.00
111 CROSBY EGYPTIAN. Earliest05	.15	.40	.90
128 BURPEE'S IMPROVED BLOOD. Sweet	.05	.15	.40	1.00
127 LUPTON'S PERFECTED DETROIT DARK RED (S). New. The darkest red beet grown. Early, round10	.20	.50	1.50
129 OHIO CANNER (S). Late, very dark red. The best canning beet. New10	.20	.50	1.50

BEETS — STOCK

	Oz.	¼ Lb.	Lb.
140 GIANT HALF SUGAR (S). Rose skinned	\$.10	\$.20	\$.50
141 GOLDEN TANKARD (S). Large, solid10	.20	.50
142 MAMMOTH PRIZE LONG RED (S). Largest, heaviest cropping mangel of all.10	.20	.50

BROCCOLI

Hot Water Treated.

No.		Pkt.	Oz.	¼ Lb.
152	ITALIAN GREEN SPROUTING (S). Does well in this section. Good yielding Strain	\$.20	\$1.00	\$3.00

Peconic,
Jan. 29th, 1937.

We have used your Sterling Strain Fordhook Bush Limas for several years and like them. We want your price on 40 bus. for 1937.
J. K. and F. C.



Picture of Arthur White, of Dry Brook, N. Y., as printed in the "Eveshan Journal," Eveshan, Worcestershire, England. Showing Mr. White and his son with a day's shipment of Blue Ribbon Brussels Sprouts packed in "pumets," as the quart baskets are called over there.

BRUSSELS SPROUT SEED

Treated with Hot Water.

2 to 3 Oz. will produce enough plants for 1 Acre.

- 161 **LESLIE STRAIN.** Fine, hard sprouts, good color. One of the best strains developed on Long Island. 25c per Pkt. \$2.00 per Oz., postpaid.
- 163 **BLUE RIBBON STRAIN.** This seed is grown from stock selected by one of the most successful Brussels Sprout growers in this section. 30c per Pkt., \$2.75 per Oz. postpaid.
- 164 **STERLING STRAIN.** Large hard sprouts, good color. The best strain for this section. Plenty of seed this year. 25c per Pkt., \$1.75 per Oz., postpaid.

CAULIFLOWER SEED

Treated with Hot Water.

2 to 3 Oz. will produce enough plants for 1 acre.

- 248 **LARGE EARLY ERFURT.** Large, white heads, heading up quite freely. One of the best strains for this section. New crop seed. Tests good and strong. Extends through a long season from early to late.

Per Pkt., 25c; 1 Oz., \$1.25; ¼ Lb., \$4.50; Lb., \$17.00, postpaid.

All Cauliflower Seed will be treated with the Hot Water treatment. Will have a large bed of Cauliflower, Brussels Sprouts and Cabbage Plants. Will be pleased to book your orders at any time. Prices always reasonable and ready to adjust them if changes occur.

Spray your Cauliflower and Brussels Sprout Plants with Black Leaf 40 or dust with Nicotine Dust. They control Thrip and Lice.

Mattituck, L. I.,
Dec. 8th, 1936.

Kindly book my order for 2 oz. Blue Ribbon and 4 oz. Sterling Strain Brussels Sprouts. We always have good sprouts when we use your seed but if we get it elsewhere we don't do so well.

GEORGE FILER.

CABBAGE SEED

1 Pkt. will produce 500 plants.

1 Oz. will produce from 2-3 thousand plants.

No.		Pkt.	Oz.	¼ Lb.
175	GOLDEN ACRE. Earliest. Yellows Resistant....	\$.10	\$.40	\$1.00
173	EXTRA EARLY JERSEY WAKEFIELD (S)	.10	.20	.70
181	EARLY CHARLESTON WAKEFIELD (S)...	.10	.20	.70
178	COPENHAGEN MARKET. Yellows Resistant	.10	.40	1.00
184	ALL SEASON (S). Large, Yellows Resistant ..	.10	.40	1.00
186	EARLY SUMMER (S). Large, flat heads....	.10	.20	.70
192	PREMIUM FLAT DUTCH (S). Large, late..	.10	.20	.70
196	LARGE LATE DRUMHEAD (S). Standard..	.10	.20	.70
205	DANISH BALL HEAD. Penn State. Hard10	.40	1.15
198	SAVOY (S). Long Island Special. Large, solid	.10	.25	.90
200	RED ROCK (S). Sure heading, large. L. I. grown	.10	.50	
212	PE TSAI. Long head, large Chinese. Choice....	.10	.20	.70
214	CHIHILI. New, sure heading. Chinese.....	.10	.25	

My Cabbage Seed is treated with the Semi-San treatment to control Black Leg and Black Stem.

CORN — SWEET

1 Lb. will plant from 100-200 hills.

No.		Pkt.	Lb.	Pk. of 12 Lbs.
336	"BURBANK" WORLD'S WONDER. 59 days. Burpee's earliest. Ears 7 inches long	\$.10	\$.25	\$2.25
304	COLUMBIA. (S) Large, white corn of excellent quality. Extra early. 72 days10	.20	2.00
307	GOLDEN SUNSHINE. (S) Extra early. Large ears. Fine quality. 75 days10	.25	2.00
301	GOLDEN BANTAM. From Burpee. Sweetest.	.10	.25	2.25
309	GOLDEN BANTAM. (S) Vaughan's Special extra prolific strain10	.20	2.00
306	BURPEE. A new extra early Yellow, sweet....	.10	.25	2.50
311	LONG ISLAND BEAUTY. Large second early	.10	.20	2.00
316	BURPEE'S DELICIOUS. Very sweet, second early. Sweetest of all white corn10	.25	2.50
341	WHIPPLE'S YELLOW. 2nd Early. Large Ears	.10	.20	2.00
312	GOLDEN GIANT. (S) Cross of Golden Ban- tam and Howling Mob. Large ears10	.20	2.00
319	GOLDEN 60 DAY MAKEGOOD. Extra early. The best money maker for M'ket gardeners	.10	.20	2.00
315	BANTAM EVERGREEN. (S) Yellow, large..	.10	.20	2.00
317	STOWELL'S EVERGREEN. (S) Standard late	.10	.20	2.00
337	COUNTRY GENTLEMAN, or SHOE PEG..	.10	.25	2.25
340	GOLDEN CREAM. Yellow Country Gentleman	.10	.25	2.25

Bovina, N. Y.,
Dec. 1st, 1936.

I had a great crop of Sprouts this Fall and if I can't have Blue Ribbon Sprouts, why I just won't raise them at all. Can you book me for 6 oz. for 1937?
MRS. WM. J. ELLIOTT.



John Simcik's truck loaded with 180 baskets of Fordhooks ready for the Auction Block.

HYBRID SWEET CORN

We are carrying two of the best Hybrid or Top Cross varieties of Sweet Corn this year and are pricing it within reason so that all may use it and see for themselves how prolific and disease free it is. Many state it yields double what the standard varieties do. Do not try to save the seed from these varieties as they will not come true but have to be bred and crossed each year.

	Pkt.	Lb.	10 Lbs.
302 MARCROSS. A cross of Golden Early Market and Whipple's Early. Earliest Hybrid	\$.15	\$.40	\$3.80
305 GOLDEN CROSS BANTAM. 12 rowed, 8 inches long. Quality unsurpassed. Most resistant to Stewart's Disease. Heavy yielding15	.40	3.50

CORN — FIELD, POP AND FODDER

1 peck of Field Corn will plant 1 acre in hills 4 ft. x 4 ft.
1 Bushel of Fodder Corn will plant 1 acre in drills.

- 320 LUCE'S FAVORITE FIELD CORN. A yellow hybrid, makes a leafy stalk and a very fine large ear.
Shelled, per lb., 10c; 10 Lbs., 85c; per bu. of 56 Lbs., \$3.50.
- 319 CORNELL No. 11. The earliest Dent corn. Large ears. Very prolific. Shelled. Per lb., 10c; 10 Lbs., 85c; Per Bu. of 56 Lbs., \$3.50.
- 353 QUEEN'S GOLDEN POPCORN. Largest and best. Buy a lb. for popping. Per Pkt., 10c; per lb., 25c.
- 355 WHITE RICE POPCORN. Bears 3 to 4 ears to stalk. Sure popper. Per Pkt., 10c; lb., 25c.
- 342 SORGHUM or EARLY ORANGE SUGAR CANE. Succulent and sweet. Per lb., 20c; per 10 Lbs., \$1.50.
- 318 SWEET CORN FOR FODDER (Stowell's Evergreen). Per 10 Lbs. at 15c; 100 Lbs. at 12c.

CARROT SEED

1 Oz. will sow 200 ft. of drill.
2 Lbs. to the acre.

No.		Pkt.	Oz.	¼ Lb.	Lb.
228	FORDHOOK PERFECTION. Ideal for Market Gardens	\$.05	\$.15	\$.40	\$ 1.20
218	AMSTERDAM FORCING. Coreless05	.15	.40	1.20
232	TENDERSWEET. Burpee's newest and best. 8 inches long. Also called Imperator05	.15	.40	1.20
220	CHANTENAY. Fine quality. Prolific05	.15	.40	1.00
226	HALF LONG NANTES. Coreless, fine05	.15	.40	1.20
225	DANVER'S HALF LONG. Burpee's05	.15	.40	1.00
230	DANVER'S HALF LONG. Sterling Special Strain. Very select for main crop05	.15	.40	1.20
236	CHANTENAY HALF LONG. Special red cored. (S) Very heavy yielding05	.15	.40	1.20

CELERY SEED

No.		Pkt.	Oz.	¼ Lb.	Lb.
266	WHITE PLUME. Earliest, self blanching	\$.10	\$.20	\$.70	
272	FORDHOOK. Burpee's Best. Dwarf, crisp20	.70	2.25	
262	GOLDEN SELF BLANCHING. French grown20	.90		
268	GOLDEN PLUME or WONDERFUL. Fall or Winter. Fine quality15	.50	1.75	
282	GIANT PASCAL. Tall, crisp and nutty. Late10	.20	.70	
275	WINTER QUEEN. Dwarf, heavy stalk10	.20	.70	
293	CELERIAC. Giant smooth Prague. Turnip rooted. The root is used for soup10	.25		

Will have a fine lot of transplanted Celery Plants this year. Place your orders early. All kinds listed. See page 49.

CUCUMBER SEED

1 Oz. will plant 100 hills. 1-5 Lbs. to the Acre.

No.		Pkt.	Oz.	¼ Lb.	Lb.
376	BOSTON PICKLING. (S) Medium sized..	\$.05	\$.15	\$.40	\$ 1.00
395	BURPEE'S FORDHOOK PICKLING05	.15	.40	1.00
380	LONGFELLOW. (S) 12 in. Fine for market05	.15	.40	1.25
379	EXTRA EARLY WHITE SPINE. 7 in... ..	.05	.15	.40	1.25
383	FORDHOOK WHITE SPINE. 10 inches ..	.05	.15	.40	1.25
389	DAVIS PERFECT. (S) 10 in. Fine05	.15	.40	1.00
399	LONG GREEN. 12 inches05	.15	.40	1.25
398	EARLY FORTUNE. (S) 9 in. Fine strain. ..	.05	.15	.40	1.00
385	EVERGREEN. Productive. 11 in. Prolific..	.05	.15	.40	1.25
396	WOODRUFF'S HYBRID. (S) Fine shipper ..	.05	.15	.40	1.00

Have a large supply of Cucumber Seed always on hand. Special prices on 5 Lb. lots. Try some Woodruff's Hybrid.

Arkville, N. Y.,
Nov. 1st, 1936.

This year I had the finest Sprouts I ever raised. From my ½ acre Blue Ribbon Sprouts I sold over \$300.00 worth, and I did all of the work myself, from sowing the seed in the frames, setting them in the field to picking them and putting them up.

MRS. BASIL TODD.

EGG PLANT SEED

No.		Pkt.	Oz.
420	BURPEE'S BLACK BEAUTY. Early and best.....	\$.10	\$.40
422	NEW YORK SPINELESS IMPROVED. Late, large Will have a fine lot of Egg Plants in season, well hardened.	.10	.40

ENDIVE

No.		Pkt.	Oz.
430	GREEN CURLED or GIANT FRINGED. Fine flav- ored for salad	\$.05	\$.15
438	DEEP HEART BATAVIAN or ESCAROLE.05	.15

KALE

Plant in Spring or Fall.

No.		Pkt.	Oz.	¼ Lb.	Lb.
447	BLUE CURLED SCOTCH. Very fine	\$.05	\$.15	\$.40	\$1.00
446	DWARF GREEN CURLED. For greens ..	.05	.15	.40	1.00

KOHL RABI

1 Oz. will sow 300 ft.

No.		Pkt.	Oz.	¼ Lb.	Lb.
456	EARLY WHITE VIENNA. Fine quality. Cook when young. Better than turnips..	\$.05	\$.15	\$.50	\$1.50
457	EARLY PURPLE VIENNA. Best quality	.05	.15	.50	1.60

LEEK

1 Oz. will sow 200 ft. of drill.

No.		Pkt.	Oz.	¼ Lb.
461	BROAD LONDON. When creamed they surpass onions. Sweet. The best kind	\$.05	\$.20	\$.70

LETTUCE

1 Oz. will plant 250 ft. of drill.

No.		Pkt.	Oz.	¼ Lb.	Lb.
475	BIG BOSTON. Burpee's select stock.....	\$.05	\$.15	\$.45	\$1.20
524	NEW YORK IMPROVED. Large size. Called Iceberg by California growers ..	.05	.15	.45	1.20
525	NEW YORK No. 12. (S) Large, quality ..	.05	.15	.45	1.20
493	EARLY CURLED SIMPSON. Black seed- ed. Cut and comes again. Early.....	.05	.15	.40	1.00
527	CREAMY HEART. (S) Quality. Midseason	.05	.15	.50	1.40
484	MIGNONETTE. Fine quality. Small. Early	.05	.15	.45	1.20
530	BURPEE'S ICEBERG. Stands hot weather	.05	.15	.45	1.20
522	HANSON. Large and sure heading. Fine ..	.05	.15	.45	1.20
537	COS or ROMAINE. Dwarf white heart05	.15	.45	1.20
529	MIXED LETTUCE. All kinds mixed together. Per Oz., 10c.				

MUSK MELON

1 Oz. will plant about 50 hills.

No.		Pkt.	Oz.	¼ Lb.	Lb.
545	DELICIOUS. Early Bender's Surprise. (S)	\$.05	\$.15	\$.40	\$1.20
546	BENDER'S SURPRISE. (S) Large, sweet	.05	.15	.40	1.00
574	BURPEE'S FORDHOOK. Luscious	.05	.15	.40	1.00
560	LAKE CHAMPLAIN. (S) An improved Emerald Gem. Fine, extra early	.05	.15	.40	1.00
570	HONEY ROCK. (S) New. Fine quality	.05	.15	.40	1.20
936	HALE'S BEST. Earliest of all. Delicious	.05	.15	.40	1.20
581	MIXED MUSK MELON. All kinds mixed.	Per Oz., 10c.			

WATER MELON

1 Oz. will plant 25 hills.

No.		Pkt.	Oz.	¼ Lb.	Lb.
599	FORDHOOK. (S) Round, sweet early	\$.05	\$.15	\$.40	\$.85
625	WONDERMELON. (S) Improved Kleckley Sweet. Large sweet. Prolific	.05	.15	.40	1.00
608	KLECKLEY SWEETS. Burpee's. Fine	.05	.15	.40	.80
611	HALBERT HONEY. Sweetest of all	.05	.15	.40	.90
610	ICE CREAM. (S) Most popular for Long Island. Long, sweet	.05	.15	.40	.85
603	SWEETHEART. Finest flavor	.05	.15	.40	1.00
613	TOM WATSON. Largest. Good quality	.05	.15	.40	.80
623	STONE MOUNTAIN or DIXIE BELLE. Large, fine quality	.05	.15	.40	.90
645	CITRON, Colorado. Preserving	.05	.15	.40	.90
602	MIXED WATER MELON. All kinds mixed.	Per Oz., 10c.			

MUSTARD

1 Oz. will sow 600 ft.

No.		Pkt.	Oz.	¼ Lb.
647	FORDHOOK FANCY. Large, good quality. Fine for salads. Sow every 2 weeks	\$.05	\$.15	\$.40
650	SPINACH MUSTARD. Fine flavor	.05	.15	.40

OKRA OR GUMBO

1 Oz. will plant 75 ft.

No.		Pkt.	Oz.	¼ Lb.
667	PERFECTED PERKINS. Long pod	\$.05	\$.10	\$.30
661	DWARF PROLIFIC. Rich meaty pods	.05	.10	.30

ONION SEED

1 Oz. will plant 200 ft.

No.		Pkt.	Oz.	¼ Lb.	Lb.
683	EARLY YELLOW GLOBE. (S) Fine	\$.10	\$.20	\$.70	\$2.00
675	JAPANESE YELLOW. (S) Best keeper	.10	.20	.70	2.00
681	PRIZETAKER. Large yellow. Mild	.10	.20	.70	2.00

ONION SEED—*Continued*

	Pkt.	Oz.	¼ Lb.	Lb.
686 RED WETHERSFIELD. (S) Largest red..	\$.10	\$.25	\$.80	\$2.50
699 WHITE PORTUGAL or WHITE SILVER- SKIN. (S) Flat, large, mild10	.20	.70	2.00
588 WHITE BUNCHING or WHITE WELSH. Best for scallions10	.25	.70	2.00

ONION SETS

Small, hard, fancy sets. 1 Lb. makes a quart. 32 Lbs. to the bushel.

No.	Pkt.	Lb.	Bu. of	
			8	32
			Lbs.	Lbs.
700 WHITE SILVER SKIN. (S) Fancy	\$.10	\$.20	\$1.30	\$4.50
702 JAPANESE YELLOW. (S) Grows better and keeps longer than any other sort. Does not shoot to seed10	.20	1.30	4.50
703 RED. (S) Best stock procurable10	.20	1.30	4.50

Spray your onions with Black Leaf 40% or dust with Nicotine Dust, and insure your crop. It is the Thrip that turns the onion tops brown.

PARSLEY

1 Oz. will sow 200 ft.

No.	Pkt.	Oz.	¼ Lb.
717 EXTRA CURLED DWARF or EMERALD	\$.05	\$.15	\$.40
720 PARAMOUNT NEWS. Solid mass of finely di- vided leaves. Deep green10	.20	.60
714 PLAIN or SINGLE. Fine for soup.....	.05	.15	.40
723 TURNIP ROOTED. For flavoring and soup05	.15	.40

PARSNIP

1 Oz. will sow 150 ft.

No.	Pkt.	Oz.	¼ Lb.
725 GUERNSEY. Broad, tapering to a point.....	\$.05	\$.15	\$.30
728 IDEAL. (S) Improved Hollow Crown, Long....	.05	.15	.30

PEPPERS

No.	Pkt.	Oz.
818 NEAPOLITAN. Early, large, mild, long	\$.10	\$.35
817 CHINESE GIANT. (S) Largest of all, mild10	.40
832 HARRIS EARLY GIANT. (S) Large early10	.35
845 LARGE BELL or BULL NOSE. Hot, large05	.30
821 RUBY KING. Large, sweet thickfleshed10	.35
837 LONG CAYENNE. Hot. Long10	.35
833 BURPEE'S NEW SUNNYBROOK. Imp. Cheese10	.35
815 CALIFORNIA WONDER. (S) New, large, sweet10	.40

Will have a fine lot of Pepper Plants in season. All kinds.

PEAS

The RADIO, BLUE BANTAM, LITTLE MARVEL, WYOMING WONDER, CARTER'S DAISY and TELEPHONE are the gardener's favorites for table use and for canning. Sow these six kinds together and they will follow each other through the season.

Easy Money, Gradus, Thomas Laxton and Laxton Progress are the four kinds used for market. The prices quoted below for bushel lots are cash prices. Add 50 cents per bushel for time. Even though Peas do not pay as a market crop, the vines make fine green manure for Cauliflower or Brussels Sprouts.

1 Lb. of Peas will plant 100 ft. of row.

1 to 2 Bu. to the acre.

No.	Pkt.	Pk. of Bu. of	
		Lb.	14 lbs. 56 lbs.
732 RADIO. Dwarf, extra early, fine quality. Plant in August for Fall. 1 ft.	\$.10	\$.25	\$3.00 \$11.00
739 ALASKA or EARLIEST OF ALL. Pick when small and they are fine.....	.10	.25	2.50 9.00
738 GRADUS. Extra early strain. New. (S)...	.10	.25	2.50 8.50
743 GRADUS. (S) Fine stock. World Record Strain. One of the best for market. Extra early. Large pods. 2 to 3 ft.10	.25	2.50 8.50
742 GRADUS IMPROVED. (S) Very large pods10	.25	2.50 8.50
744 THOMAS LAXTON. (S) Fine stock. Ear- ly. Large pods. 2½ ft.10	.25	2.50 8.50
740 EASY MONEY. An improved Gradus. (S)	.10	.25	2.50 9.00
741 LAXTON'S PROGRESS. (S) Large pods, early. 18 in. Good market sort10	.25	2.50 8.50
754 BLUE BANTAM. Highest quality 15 in...	.10	.25	2.50 9.00
753 LITTLE MARVEL. Sweet, prolific, 15 in. second early10	.25	2.50 9.00
755 NOTT'S EXCELSIOR. Second early. 15 in.	.10	.25	2.50
770 FORDHOOK WONDER. Burpee's, new, large, midseason. Quality. 26 in.10	.25	2.50
793 CARTER'S DAISY or DWARF TELE- PHONE. 18 in. Best dwarf, late10	.25	2.75
787 WYOMING WONDER. Extra large pods. Late, fine quality. New. 28 in.10	.25	2.50 9.00
788 STRATAGEM IMPROVED. (S) Sweet, large. 2 ft. Main crop10	.25	2.75
786 TELEPHONE. (S) Dark Pods. Best Tall	.10	.25	2.75
784 QUITE CONTENT. Largest pods. 6 ft....	.10	.25	2.50
812 MAULE'S GIANT SUGAR-POD. New early. 2½ ft. Edible pods10	.40	

Canterbury, Conn.,
Nov. 16th, 1936.

I had very good luck with your Sterling Strain Sprout seed this Fall and I also had good luck with your Penn State Danish Ball Head Cabbage seed. I have been living on a farm for 12 years and I have never been able to raise such fine cabbage. I had the best cabbage in this section this Fall. I am enclosing my order for 1937.

JOHN KRASNIK.

PUMPKIN

1 Oz. will plant 25 hills.

No.		Pkt.	Oz.	¼ Lb.	Lb.
862	EARLY SUGAR. (S) Fine for pies.....	\$.05	\$.10	\$.30	\$.80
872	STRIPED CUSHAW. Long-necked05	.10	.40	1.00
1048	WINTER LUXURY or PIE SQUASH...	.05	.10	.40	1.00
866	LARGE CHEESE. (S) Flattened, quality	.05	.10	.30	.75
864	CONN. FIELD. (S) Large, yellow05	.10	.25	.70

RADISH

1 Oz. will sow 50 ft. of drill.

No.		Pkt.	Oz.	¼ Lb.	Lb.
890	SAXA. (S) Crisp. Extra early. RED	\$.05	\$.15	\$.40	\$.80
893	SPARKLER or SCARLET TURNIP WHITE TIPPED. Fine for bunching..	.05	.15	.40	.80
978	GLOWING BALL. Quick growing. Fine ..	.05	.15	.40	.80
907	FRENCH BREAKFAST. Olive shaped05	.15	.40	.80
886	CRIMSON GIANT GLOBE. Large, mild..	.05	.15	.40	.80
938	WHITE ICICLE. Crisp, tender. Best long..	.05	.15	.40	.80
891	SCARLET GLOBE. Select. (S) Early, crisp	.05	.15	.40	.80
971	LONG BLACK SPANISH. Winter05	.15	.40	.80
979	MIXED RADISH. All kinds mixed. Per oz. 10c.				

SALSIFY OR VEGETABLE OYSTER

No.		Pkt.	Oz.	¼ Lb.
983	MAMMOTH SANDWICH ISLAND	\$.10	\$.25	\$.75

SORREL

No.		Pkt.	Oz.
988	NARROW LEAVED. Sour grass for greens	\$.10	\$.30



Picking Gradus Peas at Nassau Farms

SQUASH

1 Oz. will plant from 25 to 50 hills.

No.		Pkt.	Oz.	¼ Lb.	Lb.
1010	EARLY WHITE BUSH. Scalloped.....	\$.05	\$.15	\$.40	\$.90
1011	EARLY GOLDEN CROOKNECK. (S) Bush. Extra early. Tender, sweet.....	.05	.15	.40	.90
1015	GIANT GOLDEN CROOKNECK. Large. Use when young and tender. (S)05	.15	.40	.90
1016	STRAIGHT NECK SUMMER. (S) Fine quality, large. 90% straight necks05	.15	.40	1.00
1031	LONG WHITE MARROW or VEGETABLE MALLOW. Very productive ..	.05	.15	.40	.90
1030	COCOZELLE BUSH. Long green. Fine ..	.05	.15	.40	1.00
1032	BURPEE'S FORDHOOK. Quality05	.15	.40	.90
1011	ACORN or TABLE QUEEN. Fine quality. Extra selected stock. Small, for baking..	.05	.15	.50	1.60
1036	BOSTON MARROW. Golden skin05	.15	.40	.85
1038	BLUE HUBBARD. Large. Selected stock.	.05	.15	.50	1.60
1040	WARTED HUBBARD. Larger and more heavily warted than No. 103805	.15	.40	.90
1042	RED or GOLDEN HUBBARD. One of the best for pies. Golden flesh. Early05	.15	.40	.90

The Squash has been found to be one of the vegetables that contain a quantity of valuable vitamins. Plant squash for your children and serve it like potatoes.

SWISS CHARD OR SILVER BEET

Swiss Chard is one of the best greens there is. Cut outside leaves and it will grow out again and again. One Oz. will sow 50 ft. of drill.

No.		Pkt.	Oz.	¼ Lb.	Lb.
136	LARGE RIBBED WHITE. Smooth leaves that wash easily. Serve stems like as- paragus	\$.05	\$.15	\$.40	\$.90
140	FORDHOOK GIANT. (S) Largest of all..	.05	.15	.40	.90

SPINACH

1 Oz. will sow 50 ft. of drill.

No.		Pkt.	Oz.	¼ Lb.	Lb.
996	KING OF DENMARK. (S) Stands a long time before going to seed.....	\$.05	\$.10	\$.25	\$.45
989	SAVOY LONG STANDING. (S) Best for fall sowing. Long standing. Fine.....	.05	.10	.25	.45
988	NEW ZEALAND. (S) Hot weather Spin- ach. Spreading. Use the tips or new shoots. Good till Fall.....	.05	.10	.30	.75
992	PRINCESS JULIANA. Imp. Long season.	.05	.10	.20	.40
985	OLD DOMINION, BLIGHT RESISTANT. (S). Large crumpled leaves. Fine05	.10	.25	.50
986	NOBLE GIANT. (S) Thick leaf. Largest... 5 Lbs. or more at 10c per Lb. less than above prices.	.05	.10	.25	.50

HERBS

No.		Pkt.	Oz.
1315	CATNIP. Perennial. For seasoning.....	\$.10	\$.50
1319	DILL. Annual. For pickles, soup and sauce.....	.05	.15
1326	TRUE LAVENDER. Perennial. For perfume.....	.10	.50
1327	MARJORAM, SWEET. Annual. Seasoning10	.35
1333	SAGE. Perennial. Seasoning10	.35
1335	SAVORY, SUMMER. Annual. Flavoring.....	.10	.20
1341	THYME. Perennial. For soups, stews, gravies, etc...	.10	.40
1321	FENNELL, SWEET. The garden favorite10	.25

TOMATO SEED

1 Oz. will produce 2000 plants or more.

No.		Pkt.	Oz.	¼Lb.	Lb.
1097	SUNNYBROOK EARLIANA. Earliest ..	\$.10	\$.35	\$1.15	\$3.75
1098	RED HEAD. Early. Livingston's stock10	.30	1.00	3.50
1126	BREAK O'DAY. Early. Wilt resistant10	.40	1.20	4.00
1087	JOHN BAER. Early. Very prolific10	.30	1.00	3.50
1120	BONNY BEST. Early. Productive10	.30	1.00	3.50
1116	PONDEROSA. Livingston. Large, smooth	.10	.50	1.50	5.00
1070	MARGLOBE. Wilt resistant. One of the best for main crops. (S)10	.30	1.00	3.50
1106	PRITCHARD. New, early, wilt resistant ..	.10	.40	1.20	4.00
1071	CLARKE SPECIAL B. (S) Selected strain	.10	.40	1.20	4.00
1072	STONE. Livingston's selected seed. Choice	.10	.30	1.00	3.50
1108	BURPEE'S MATCHLESS. Large, smooth	.10	.30	1.00	3.00

Will have a fine lot of plants from the above strains of seed and several other kinds in season. Would appreciate your early orders if you want plants by the thousand.

TURNIP AND RUTA BAGA SEED

No.		Pkt.	Oz.	¼Lb.	Lb.
1159	EXTRA EARLY WHITE MILAN.....	\$.05	\$.10	\$.30	\$.70
1163	PURPLE TOP WHITE GLOBE.....	.05	.10	.30	.70
1183	GOLDEN BALL or ORANGE JELLY....	.05	.10	.30	.70
1191	BURPEE'S PURPLE TOP YELLOW RUTA BAGA. Standard for winter....	.05	.10	.30	.70
1192	NEYLON'S PURPLE TOP RUTA BAGA. Special strain. Fine quality.....	.10	.20	.60	1.50
1193	LUPTON'S EARLY NECKLACE. Ruta Baga. 3 weeks earlier than other kinds	.05	.10	.30	.80

WHITE MUSCOVY DUCKS

We have a nice pen of these pure white, meaty ducks. Will sell at the farm 12 eggs for 50c.

GRASS, CLOVER AND ALFALFA SEED

Prices liable to change without notice.

Terms strictly cash.

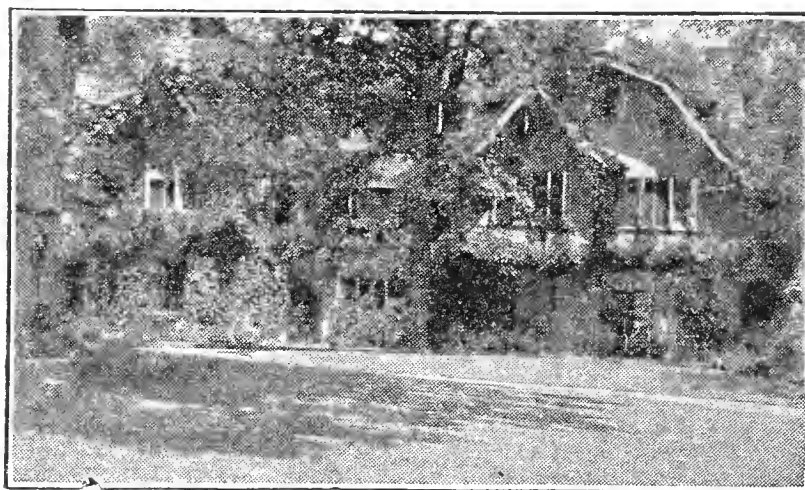
I make my prices just as reasonable as is possible consistent with the quality. It is the very last fraction of 1% in purity that costs money. I believe that it pays big returns, too, as it is truer in seeds than in anything else that "the best is none too good."

In sowing Timothy alone without Clover use 15 to 20 Lbs. to the acre. If your land is sour and Grass and Clover does not do well as a rule, a little lime sown on top of the ground and harrowed in before sowing the seed would be a great help.

All our Clover and Alfalfa Seed is grown in the Northwest.

Special prices on bag lots. Ask us about them.

	5 Lbs. and Over Per Lb.	1 Lb. to 4 Lbs.
TIMOTHY. The brightest and purest seed on the market		
99.80% pure. \$11.50 per 100 Lbs.	\$.12	\$.15
RED CLOVER. Domestic. Northern grown. 99.50% pure	.42	.45
ALSIKE CLOVER. Does well where Red Clover sometimes fails. Best grade. Domestic. 99% pure32	.35
ALFALFA. Finest. Northwestern grown. 99.5% pure..	.35	.37
ALFALFA GRIMM. Certified. Blue Tag. Stands the winter better than most. Pure. Northern grown48	.50
SWEET CLOVER. White blooming. Scarified12	.15
CRIMSON CLOVER. Sow in July and August12	.15
WHITE CLOVER. Fine for lawn or pasture. Purity 99%	.40	.45
NEW ZEALAND CHEWING FESCUE or RED FES- CUE. Fine for pasture or lawn40	.45
RED TOP. Fancy re-cleaned. Fine for lawns, stump ground or pasture. Best grade. Purity 98%27	.30
KENTUCKY BLUE GRASS. Does best on sweet soil. Best grade. Fine for lawns, pasture and orchard27	.30
SOUTH GERMAN CREEPING BENT. Very best grade. Best for lawn or putting greens	1.00	1.10
COLONIAL BENT. Best Native Bent for this section. Finest quality75	.80
ORCHARD GRASS. Earliest pasture20	.22
GOLDEN MILLET. Sow in June for pasture and hay ..	.08	.10
HUNGARIAN GRASS. Easier to cure than the Golden	.08	.10
JAPANESE MILLET. Considered the best kind of all..	.07	.10
SUDAN GRASS. Grows something like Sorghum. 50 Lbs. for \$3.7508	.10
STERLING PASTURE MIXTURE. 9 of the best kinds of Grass and Clover Seed, suitable for pasture. Con- tains no Orchard Grass. Use 20 to 40 Lbs. to the acre. Recleaned seed. 25 Lbs. or more at 29c per Lb.	.30	.32
LEGUME-AID for inoculating Alfalfa. ½ Bu. size, per bottle, 30c 1 Bu. size, per bottle, 50c		
LEGUME-AID for Soy Beans, Vetches, etc. 1 Bu. size, per bottle, 30c		



LAWN MAKING

Our Lawn Grass Seed is exactly what we represent, recleaned and free from weeds, and we sell many hundred pounds all over Long Island.

Loosen the soil in which a new lawn is to be made to a depth of at least five inches, and lighten it with humus, compost or manure if it is heavy and inclined to bake. Apply fertilizer liberally, either Sheep Manure, Bone Meal, Vigoro or our Rasin Brand fertilizer. Use three inches of top soil or humus if too light.

Sow in the early spring when cool weather and ample rainfall will insure complete germination and a good start for the seedlings before hot dry weather comes. If seeding must be delayed, special precautions must be taken to prevent the ground drying out. Early fall is a very desirable time to seed, if moisture is sufficient.

See that the seed is well covered. Rake it into a new seed bed and roll so that the soil is firmed over the seed. Where seed is sown on an old lawn always cover it with a top dressing of sand or soil and fertilizer. Seed thrown on the top of hard ground has no chance to grow and will merely wash off.

We will do your grading and seeding for you at a very reasonable cost. We would appreciate a chance to figure on your job.

LAWN GRASS SEED

	5 Lbs. and Over	1 Lb. to 4 Lbs.
	Per Lb.	
STERLING MIXTURE. We prepare this mixture ourselves at Sterling Farm, from the highest grade Colonial Bent, Kentucky Blue Grass, Fancy Red Top and White Clover. This mixture has given the very best satisfaction throughout Long Island. Quick growing and permanent. 25 Lb. lots at 34c per Lb. 50-100 Lb. lots at 33c per Lb.	\$.35	\$.38
PARKWAY MIXTURE. This is my own mixture. It contains no White Clover, but large amounts of Colonial Bent and Kentucky Blue Grass with some Fancy Red Top. 25 Lb. lots at 39c per Lb.; 50-100 Lb. at 38c per Lb.40	.45
SANDY SOIL MIXTURE. A special mixture doing well on light soil and in very dry places. Sow 1 Pk. Seed Oats with every 25 Lbs. seed. 25 Lbs. at 34c per Lb...	.35	.38

LAWN GRASS SEED—Continued

	5 Lbs. and Over Per Lb.	1 Lb. to 4 Lbs.
STERLING SHADY LAWN. Where there is only partial shade, the other Lawn Grasses are all right, but where it is quite shady, use this special mixture. We use only the best grade of seed in our mixtures. 25 to 49 Lbs. @ 39c Lb. 50 Lbs. and over @ 38c	\$.40	\$.45
WILD WHITE CLOVER. Best strain. Use 1 Lb. per acre. Fine for pasture		2.00
WHITE CLOVER. Very best grade40	.45
CREEPING BENT GRASS. South German. True	1.00	1.10
COLONIAL BENT. A native Bent of finest quality. Most suitable for this section. Best quality75	.80
CHEWING'S FESCUE. New Zealand grown40	.45
ROUGH STALK MEADOW GRASS. Fine for shade..	.40	.45
KENTUCKY BLUE GRASS. Fine for lawns27	.30
FANCY RED TOP. Quick growing. 98% pure27	.30

For a good, permanent lawn, use 1 Lb. lawn seed to 400 sq. ft. 80 to 100 lbs. to the acre. For reseeding an old or poor catch, use half that amount. For quick results use double the above quantity.

FARM AND FIELD SEED

SEED POTATOES

Use 4 to 5 sacks to the acre.

(Prices are liable to change without notice)

We have a nice lot of Seed for Spring demand, both Cobblers and Green Mountains. All certified seed. Handsome stock.

	Pk.	Sack of Bu. 150 lbs.
IRISH COBBLERS. Maine grown	\$.70	\$2.50 \$5.50
GREEN MOUNTAIN. Maine grown70	2.50 5.50

The above prices are net cash when you get the goods. Time prices are a matter of adjustment.

FIELD SEED

Prices liable to change without notice.

- SEED OATS. *Scottish Chief*. Use 2 to 4 Bu. to the acre. The best for this section. Pk. of 8 Lbs., 60c; Bu. of 32 Lbs., \$1.75.
- PATTERSON OATS. Certified. New. Very prolific. Pk., 50c; Bu., \$1.50.
Seed Oats by the Bag. A very heavy Seed Oat packed in 80-Lb. bags, \$2.50. 5 bags at \$2.40 per bag.
- SEED WHEAT. *Marquis*, the best Spring Wheat. Very prolific, early. Pk. of 15 Lbs., 85c. Bu. of 60 Lbs., \$2.95.
- SEED RYE. *Spring Rye*. Fine seed. Bu. of 60 Lbs., \$2.75.
Pk. of 14 Lbs., 75c.
- SPRING VETCH. For a cover crop. Mix with oats. 10 Lbs., 65c; Bu. of 60 Lbs., \$3.90. Inoculate your Vetch Seed with Legume-Aid.
- CANADA FIELD PEAS. For cover crop. Use 1 Bu. Peas and 1 Bu. Oats to the acre. 10 Lbs., 75c; Bu. of 60 Lbs., \$3.75.

FIELD SEED—*Continued*

SOY BEANS. Black Wilson. Very productive.
10 Lbs., 70c; Bu. of 60 Lbs., \$3.10.

SUDAN GRASS. We find this the best Grass for Pasture that we have ever tried. Use 20 to 40 Lbs. with 1 Bu. of Oats, on one acre of ground. Sow after ground warms up on good soil.

For Hay use 20 to 35 Lbs. to the acre, broadcast, or 10 Lbs. in drills and cultivate. Crops of 5 tons to the acre have been grown. Northern seed. Per Lb., .10c; 5 Lbs. or more, .08c per Lb.; 50 to 100 Lbs., @ 7½c per Lb.

WARNING — Do not sow your Soy Beans, Sudan Grass or Spring Vetch until your ground is warmed up a little. If sown too early they will fail to germinate, or if they do sprout, they will not thrive.

AUSTRIAN WINTER PEAS. A new legume for sowing in the Fall. Per 10 Lbs., \$1.00; per 100 Lbs., \$8.50.

BUCKWHEAT. Japanese. Does well on sour soil. Best for this section. Very large grain. 10 Lbs., 60c; Bu. of 48 Lbs., \$1.95; 5 Bu. at \$1.90 per Bu.

RAPE SEED. Dwarf Essex. Fine for Ducks. Per Lb., 15c; 10 Lbs. or more, at 12c per lb.

BARLEY. Fancy Six Row. Makes good pasture. Does not rust like Oats. 10 Lbs., 70c; Bu. of 50 Lbs., \$2.25.

HUMUS

This is one of the best Lawn Makers, especially for poor soils.
Per bag, about 80 Lbs.\$2.00

SHEEP MANURE

Fine for Lawns, Gardens and Flower Beds. Also the best thing to top-dress seed beds to insure a good crop of Cauliflower and Brussels Sprout plants. This is pure Sheep Manure. Best grade.

10 Lb. bag	\$.40
25 Lb. bag.....	.90
100 Lb. bag	2.75
500 Lb. (5 bags)	12.00
2000 Lb. (20 bags)	40.00

All the above prices are net cash.

BOVUNG

A pulverized dry Cow manure mixed with Peat Moss. Wonderful for lawns, roses and flowers of all kinds.

Packed in 25 and 50 Lb. bags.

25 lb. bag.....	\$1.00
50 lb. bag.....	1.50

BONE MEAL

One of the best fertilizers for Lawns, Roses, Trees and Flowers. Best grade. Very fine, steamed Bone.

10 Lb. bag	\$.50
25 Lb. bag	1.00
100 Lb. bag	3.00
500 Lb. (5 bags)	14.00
2000 Lb. (20 bags) very best grade.....	42.00

The above prices are net cash.

GERMAN PEAT MOSS

A fine ground Peat Moss, fine for mulching trees, shrubs, perennials or mixing with soil to make it of good texture. Holds moisture well. Best thing for Rhododendrons and Azaleas.

25 Lb. bag. Horticultural Brand. The best	\$ 1.00
Large bale of about 175 Lbs. Same grade	3.50

NITRATE OF SODA

Use 1 to 2 bags to the acre on your hay ground, in May, and for your Cauliflower and Sprouts in September. Makes a quick-growing lawn.

10 Lb. bag	\$.50
100 Lb. bag	3.00
500 Lbs. (5 bags)	12.00
2000 Lbs. (20 bags)	Price on Application

The above prices are net cash.

LIME

Hydrated Lime is the most easily assimilated Lime there is. This is very fine for Lawns and Gardens. Also for seeding down grass, preparing a seed bed, or your Cauliflower field.

10 Lb. bag	\$.20
50 Lb. bag50
500 Lbs. (10 bags)	4.50
2000 Lbs. (40 bags)	Price on Application

The above prices are net cash and liable to change without notice.

GARDEN FERTILIZER

Rasin Brand Fertilizer, analyzing 5 per cent Nitrogen, 8 per cent Phos. Acid and 5 per cent Potash, suitable for any growing crop and most especially your Garden.

10 Lb. bag, 5-8-5	\$.40
50 Lb. bag, 5-8-5	1.25
125 Lb. bag, 5-8-5	2.25
500 Lb. (4 bags), 5-8-5	8.50
2000 Lbs. (16 bags) 5-8-5	Price on Application

The above prices are net cash.

HOTKAPS

A hothouse for every plant. Wonderful results with early crops. Try a row with and a row without and see for yourself. Send for pamphlet showing results.

1000 Hotkaps packed in carton	\$10.00
250 Hotkaps. Trial Garden Package with Setter and Tamper....	3.75
100 Hotkaps. Home Garden Package with Setter and Tamper...	2.50
100 Hotkaps. Loose, per Doz., 25c	1.50

D - X

A concentrated Pyrethrum Spray for the garden, farm and orchard. Kills sucking and chewing insects and is non-poisonous to humans. Send for descriptive circular, giving prices, quantities to use, etc.



1 Lb. pkg.....	\$.10
5 Lb. pkg.....	.45
10 Lb. pkg.....	.85
25 Lb. bag	1.50
50 Lb. bag	2.50
100 Lb. bag	4.00

A wonderful fertilizer for Lawns, Shrubbery, Flower and Vegetable Gardens. Contains many necessary elements that most fertilizers do not have. Send for booklet.

FAIRWAY FERTILIZER

For Lawns and Grass.

10 Lb. bag (enough for 500 sq. ft.).....	\$.75
25 Lb. bag (enough for 1,250 sq. ft.).....	1.50
50 Lb. bag (enough for 2,500 sq. ft.).....	2.50
100 Lb. bag (enough for 5,000 sq. ft.).....	4.00

Convenient, easy to handle. Complete directions on every bag.

GOLD FISH

We carry a good supply of all kinds.

Each

TROPICAL FISH. Guppy or Rainbow Fish. 6 for 50c..	\$.10
COMMON GOLD FISH. Small to medium large.....	.05 to \$.15
COMMON GOLD FISH. Extra large for pools.....	.25 to 1.00
JAPANESE FANTAILS. Medium to large.....	.25 to .50
JAPANESE TELESCOPES. Medium25 to .50
JAPANESE COMETS. Medium to large.....	.15 to .25
SHUBUNKINS. Many colors15 to .35
BLACK MOORISH TELESCOPES. Medium25 to .50
JAPANESE SNAILS. Large15
CABOMBA. The green under-water plant, 3 for 5c; per Doz.,	15c.
PUTNAM'S BUG FOOD. Best. Per Box 22c; 5 Boxes for	\$1.00.
FISH BOWLS and AQUARIUMS on hand, or can get what you	want on order. Prices very reasonable.
SPECIAL SALE of one 2 Gal. Bowl and four Common Gold Fish,	95c.
PRICES subject to change without notice.	

WATER LILIES AND AQUATICS

Suitable for Ponds, Pools and Aquariums.

Each

CABOMBA. Viridifolia. For aquariums. 3 for 5c; per bunch..	\$.15
LUDWEIGIA MULERTTI. Reddish green leaves, per bunch....	.15
PARROT'S FEATHER. Very graceful, bright green, per bunch.	.15
THALIA DEALBATA. Tall Canna-like plant.....	1.00
UMBRELLA PLANT. Very artistic25
VARIEGATED SWEET FLAG. Green and white25
WATER HYACINTH. Large plants. Lilac rose flowers.....	.20
WATER POPPY. Yellow flowers25
WATER LILY. Gloriosa. The most popular deep red.....	2.50
WATER LILY. Rose Arey. Deep pink, fragrant. Almost red	1.25
WATER LILY. William Faulkner. The best red	2.50
WATER LILY. Odorata. Native white, fragrant50
WATER LILY. Marliacea Chromatella. Best yellow.....	1.50

Can get you any other kind you may want at short notice.

FLOWER SEEDS

Very Best Annuals. From Burpee.

Pkt. new Double Hybrid Nasturtium given with every dollar's worth of Flower Seeds ordered. Ask for it.

No.		Pkt.	¼ Oz.	Oz.
1502	AGERATUM. Blue Ball. 6 inches. Finest for border. Blooms all Summer.....	\$.10	\$.25	\$.80
1504	AGERATUM. Blue Cap. New. 8 in.20	.40	
3281	ASTER. Queen of the Market. Earliest. Mixture of all colors. 15 inches. Wilt resistant strain ..	.10	.30	1.00
3037	ASTER. Crego Giant Mixture. Large flowers. Petals curled. 8 colors. 2 ft. Wilt resistant strain	.10	.30	1.00
3298	ASTER. Royal or Early Branching. Mixed. 6 colors. Wilt resistant10	.30	1.00
3052	ASTER. Giant Branching. Very large flowers. Mixed. 21 colors. Wilt resistant10	.30	1.00
3271.	ASTER. Astermums. Something different. 3 colors mixed. Very large, early15		
7626	ASTER. Giant Crego Collection. Wilt resistant. Large, beautiful. 1 Pkt. of each of six colors. The collection 50c. Separate colors per pkt. ..	.10		
1520	ALYSSUM. Sweet. White. Free blooming. One of the best for beds and borders10	.15	.40
1523	ALYSSUM. Lilac Queen. 6 inches10	.25	.75
1524	ALYSSUM. Little Gem. 4-5 inches. Compact Blooms all summer. Fine for borders.....	.10	.25	.75
2265	ANTIRRHINUM. New Rust Proof Giants. Many colors mixed. A wonderful strain15	.75	
1731	ANTIRRHINUM. Majestic. Semi-Tall. New, giant-flowering Fine for cutting15	1.00	
1566	ARCTOTIS. Blue-eyed African Daisy. Silvery flowers, sky-blue eye. Beautiful. 2 ft.10	.20	
1759	BALSAM. Lady Slipper. Double Camellia flowered. All colors. 2 ft.10	.20	
2774	BLUE LACE FLOWER. Fine for cutting. 1½ ft. Blooms all Summer15	.30	1.00
1807	CALENDULA. Double mixed. Giants10	.15	.50
1785	CALENDULA. Orange Giant. Double. Rich orange. Large blooms, long stems10	.15	.50
1787.	CALENDULA. Sunshine. Chrysanthemum-like flowers. Extra large. Canary yellow10	.15	.50
1809	CALLIOPSIS. Golden Wave. Bright Yellow with a dark brown center. Annual. 20 inches..	.10	.15	.50
1816	CANDYTUFT. Giant Hyacinth Flowered. Finest white. Needs sun. 12 inches10	.25	.50
1830	CANDYTUFT Mixed. 6 colors. 12 inches.....	.10	.15	.40
1848	CARNATION. Marguerites, Giant mixed. Early flowering. Large, 14 inches. Fragrant.....	.10		
1864	CELOSIA. Magnificent plumed Celosia. Burpee's best Mixed colors.....	.10		

ANNUAL FLOWER SEEDS—*Continued*

No.		Pkt.	¼ Oz.	Oz.
1912	COCKSCOMB EMPRESS. Rich purple red flowers. Large combs, purple leaves.....	\$.10		
1885	CENTAUREA. Double Cornflower. Mixed10	\$.15	\$.50
1876	CENTAUREA. Imperialis. Giant Sweet Sultan. Mixed Colors. Finest of all10	.15	.50
1942	COSMOS. Early Large Flowering. Mixed10	.15	.50
1963	COSMOS. Early Double Crested. White, pink and crimson, separate colors or mixed10	.50	
1947	COSMOS. Late flowering. 6 ft. tall. Mixed10	.15	.50
1922	COSMOS. Burpee's Sensation. New. Early Giants.	.15	.50	
1896	CHRYSANTHEMUM, or Painted Daisy. Single. Mixed. Fine for cutting10	.15	.50
1899	CYNOGLOSSUM. Blue Bird. Chinese Forget-Me-Not. Likes hot, dry location. Fine for cutting.	.15	.50	
2033	DAISY, AFRICAN Hybrids. All colors mixed	.10		
2032	DIANTHUS. Fordhook's Favorites. Mixed old-fashioned Pinks. Single and double.....	.10		
2039	DIASCIA. Twinspur. Rose pink. 12 in.15		
2055	ESCHSCHOLTZIA or CALIFORNIA POPPY. Sunset mixture. All of the best kinds10	.15	.50
2046	ESCHSCHOLTZIA. Golden Rod. Golden orange, large. Plant in full sun10	.15	.50
2854	EVERLASTING. Mixed. All varieties.....	.10		
2058	EUPHORBIA. Snow on the Mountain. Makes a fine show in the Fall. 2 ft.10	.15	
2200	FOUR O'CLOCK. Tom Thumb. Mixed colors. Variegated golden leaves. 2 ft.10	.15	.40
2086	GAILLARDIA. Double mixed. Fine for cutting	.10	.15	.50
2093	GYPHOPHILA. Annual Baby's Breath. Rose10	.15	.50
2091	GYPHOPHILA. Annual. White. Fine for cutting. Larger flowers than Perennial10	.15	.50
2846	HELICHRYSUM. Strawflower. Mixed colors. Makes a beautiful Winter bouquet. Cut before fully opened. Hang in a cool place10	.25	
2119	KOCHIA or BURNING BUSH. Giant Christmas. Green bushes turning red in the fall10	.15	.40
2153	LARKSPUR. Giant Imperial. Double. Delphinium flowered. 3 ft. Burpee's Special Mixture10	.30	
2777	LARKSPUR COLLECTION. Giant Imperial. Double flowered. 6 best varieties 1 pkt. each 50c	.10		
2156	LARKSPUR. Early Giant Hyacinth flowered. 3 ft.	.10	.30	
2145	LOBELIA. Crystal Palace. Compact border plant. Deep blue flowers. Blooms until frost.....	.10		
2146	LOBELIA GRACILIS. Deep blue. Fine for hanging baskets and window boxes.....	.10		
2162	LUPINE. Annual. July and August. Does well in the shade. Mixed colors. 2 ft.10	.10	.30
2179	MARIGOLD, ORANGE ALL DOUBLE. Deep orange. Tall African. A better strain10	.30	1.00
2199	MARIGOLD. Collarette. Crown of Gold. New Odorless foliage25	1.50	
2171	MARIGOLD. Lemon. All Double. Immense double flower of lighter color10	.30	1.00

ANNUAL FLOWER SEEDS—*Continued*

No.		Pkt.	¼ Oz.	Oz.
2180	MARIGOLD. GUINEA GOLD. New carnation flowered. Rich orange. Great bloomer	\$.10	\$.30	\$1.00
2211	MARIGOLD. DWARF GOLDEN CHARM. Double French Marigold. Rich orange. 1 ft. . .	.10	.25	.80
2222	MARIGOLD. HARMONY. French. Golden orange center, outside petals mahogany red. . .	.10	.25	.80
2226	MIGNONETTE. White Pearl. The very best white. Large sweet scented trusses10	.30	
2217	MIGNONETTE. Golden Sunset. Yellow10	.30	
2232	MIGNONETTE. FORDHOOK FINEST MIXED. A mixture of the very best kinds10	.20	.50
2354	NASTURTIUM. Burpee's Gorgeous Dwarf. Mixed. ¼ Lb., 45c; per Lb., \$1.25, postpaid.05	.05	.15
3110	NASTURTIUM. Fordhook Favorites. Burpee's best mixture. Tall or climbing. ¼ Lb., 45c; per Lb., \$1.25, postpaid05	.05	.15
2326	NASTURTIUM. Burpee's New Double Scarlet. Fiery orange scarlet. Sweet scented10	.10	.25
2331	NASTURTIUM. Burpee's Double Hybrids. New. All colors. Mixed. Semi-dwarf. . . ¼ Lb., 80c	.10	.10	.25
2330	NASTURTIUM. Burpee's New Dwarf Giant Globe. Mixed colors10	.10	.25
2328	NASTURTIUM GOLDEN GLEAM. Double Sweet scented. Semi-dwarf. Beautiful05	.05	.15
2513	PANSY. Burpee's Blend of Giant and Fancy types. Unsurpassed, waved petals25	2.00	
2472	PANSY. Swiss Giants. New. Large, ruffled and crinkled blooms. Special Mixture40		
2570	PETUNIA. Balcony Mixed. Dwarf, all colors. One of the best mixtures for window boxes. .	.10		
2569	PETUNIA. Giant FLUFFY RUFFLES. Large, fringed and ruffled. Beautiful mixed colors. .	.35		
2539	PETUNIA. Elk's Purple. This is the finest single, deep purple. Extra large.25		
2574	DOUBLE PETUNIA. Fordhook Fancy Fringed. One of the most beautiful mixtures. Double	.50		
2538	PETUNIA. Rose of Heaven. Rich rose colored. Continuous bloomer. 12 in.15		
2558	PETUNIA. Pink Glory. Large, fine25		
2567	PETUNIA. Burpee's Defiance. Mixed giant ruffled, an extra large strain.25		
2560	PETUNIA. Rosy Morn. The most popular kind for Window Boxes, Hanging Baskets, or Bedding. Pink, white throat.15		
2556	PETUNIA. Enchantress mixture. Dwarf10		
2563	PETUNIA. Burpee's Blue. The best blue bedder	.15		
2581	PHLOX DRUMMONDI. Fordhook Finest Mixed. All of Burpee's finest in mixture. Tall10	.30	1.00
2575	PHLOX. Dwarf Mixed. Large flower heads. Fine for Rock Gardens, 5-6 inches.15		
2630	POPPY. Double Shirley Hybrids. Beautiful10		
2644	POPPY. Peony Flowered. Double, mixed10		
2631	POPPY. Fordhook Hybrids. Finest, mixed.10		

ANNUAL FLOWER SEEDS—*Continued*

No.		Pkt.	¼ Oz.	Oz.
2659	PORTULACA. Double mixed. Brilliant mixture. Best for Rock Gardens	\$.10		
2652	PORTULACA. Single mixed. Burpee's finest...	.10		
2670	RICINUS or CASTOR OIL BEAN. Red Spire. Most Ornamental. Plant a few in your lawn and garden for the Ground Moles10	\$.15	\$.35
2707	SCABIOSA. Pin Cushion Flower. Burpee's Imp. Giant Hybrids. Mixed. Fine for cutting15	.35	.75
2677	SALPIGLOSSIS. Velvet Flowers. Mixed colors.	.10		
2691	SALVIA. America. Early flowering, very pro- fuse blooming, and about 1½ ft. high15	.75	
2684	SALVIA. Bonfire. Brilliant scarlet spikes, stand clear from the dark green foliage. 2 ft. high ..	.15	.75	
	Will have a fine lot of plants from both these kinds of seed.			
2731	STOCKS. Dwarf double. 10 weeks. Mixed. Fine for bedding. Early flowering. 18 in.10	.70	
2765	SUNFLOWER. Double Chrysanthemum flow- ered. Fine for border or hedge10	.10	.30
6075	SUNFLOWER. Large Russian. The largest of all. Per ¼ Lb., 20c; per Lb., 35c.....	.05	.05	.10

BURPEE'S SWEET PEAS

None Better.

No.		Pkt.	¼ Oz.	Oz.
3599	SWEET PEAS. Burpee Blend. Burpee's mixture of all varieties, colors and shades. ¼ Lb., 50c; Lb., \$1.75, postpaid	\$.10	\$.10	\$.20
3598	SWEET PEAS. Giant Ruffled Beauties. Frilled and ruffled. Beautiful, large blooms. ¼ Lb., 90c; Lb., \$2.50, postpaid10	.10	.25
3300	SWEET PEAS. Burpee's Early Flowering. Con- tains all the newest early flowering sorts. All shades and colors. ¼ Lb., 75c10	.10	.25
7325	SWEET PEA COLLECTION. Eight Ruffled Beauties. 1 Pkt. of each kind, \$1.00; postpaid. The choicest collection to be found15		
7613	SWEET PEA COLLECTION. Six popular Sweet Peas. Will make 20 ft. row. 1 pkt. of each, 25c postpaid. Separate colors per pkt.05		
7305	SWEET PEA COLLECTION. Eight Giant flow- ered Sweet Peas. 1 Pkt. of each kind. Will plant a 25 ft. row. 75c postpaid10		
<hr/>				
2770	TORENIA FOURNIERI. Dark Blue with yellow throat. Fine for Window Boxes.....	.15		
2780	VERBENA. New Giant Mixed. Fine for Bor- ders, Boxes, and Beds. Everblooming15	.45	1.00
2781	WILD FLOWER GARDEN. A mixture of showy Annuals, both tall and dwarf. Sow thickly where you want them to bloom10	.10	.25
2813	ZINNIA. Burpee's Giant Mammoth Mixture. In- cludes ten of the newest and best kinds10	.20	.60
3195	ZINNIA. Giants of California. Mixed. All colors	.10	.20	.60

ANNUAL FLOWER SEEDS—Continued

No.		Pkt.	¼ Oz.	Oz.
2815	ZINNIA. Lilliput. Baby or Pompon. Small flowers. Mixed colors. Fine for cutting	\$.10	\$.20	\$.60
2834	ZINNIA. Dahlia Flowered. Exquisite. Many brilliant colors. Burpee's Special Mixture10	.15	.50
3224	ZINNIA. New Cupid. Smallest of all. Burpee's Special Mixture10		
7625	ZINNIA COLLECTION. SIX GIANT DAHLIA FLOWERED ZINNIAS. A wonderful collection. 1 Pkt. of each, 35c. Separate colors. Per Pkt.10		

All the above Flower Seeds are priced postpaid. Burpee puts out many other kinds and varieties that I have not listed. Also many collections of flower seeds. If in need of any kind that I have not listed let me know and I will get it for you and may be able to save you time and money. See following pages for Perennial and Vine seeds. Can get separate colors of any of the above on short notice.

PERENNIAL FLOWER SEEDS

Perennial Flower Seeds may be sown in February or March indoors and transplanted. If sown where you want them later and thinned out they will bloom the following year. If you want them to surely bloom this year buy our Perennial Plants listed on pages 28-29-30-31.

Best quality seeds from Burpee. Can get others on order if desired.

No.		Pkt.	¼ Oz.
3706	ALYSSUM. Gold Dust or Basket of Gold. Early....	\$.10	\$.30
4055	AQUILEGIA or COLUMBINE. Long Spurred Hybrids. Beautiful. Many colors. Burpee's Best20	
3710	ANCHUSA. Italica Dropmore. 4 ft. Deep blue10	.25
3726	BELLIS or ENGLISH DAISY. Early, double mixed15	
3741	CAMPANULA. Cup and Saucer Canterbury Bells. Mixed colors. Beautiful10	
3733	CAMPANULA. Bellflowers. Single mixed.....	.10	
3734	CAMPANULA. Burpee's Best Double Mixed.....	.10	
3756	CARNATION. Chabaud Giant Improved, mixed. One of the most beautiful of all Hardy Pinks.....	.15	
3763	CENTAUREA MONTANA. Hardy Cornflower. Blue. Blooms in June, July and August.....	.10	.40
3768	COREOPSIS. Grandiflora. Pure yellow. 2 ft.....	.10	
3770	DAISY. Shasta. Alaska. Large blooms. 2-3 ft.15	.50
3771	DAISY. Burpee's Floradale. Curved, loose petals15	
4080	DELPHINIUM BELLAMOSUM. Rich, deep blue ..	.15	
3774	DELPHINIUM BELLADONNA IMP. Light blue ..	.15	
3728	DELPHINIUM. Floradale Hybrids. Large spikes covered with double blooms of exquisite color30	
3667	DIANTHUS ROCK GARDEN. RARE SPECIES. Dwarf mixed, sweet scented. New20	
3781	DIANTHUS ALLWOODI. Double, semi-double and single. Everblooming. Sweet, mixed25	
3794	FOXGLOVE or DIGITALIS. Giant Shirley. Beautiful, tall spikes, mixed colors.....	.15	

PERENNIAL FLOWER SEEDS—*Continued*

No.		Pkt.	¼ Oz.	Oz.
3914	GAILLARDIA. Dazzler, bright golden, red center..	\$.15		
3807	GYPSOPHILA. Single. Fine for bouquets10	\$.25	
3799	GYPSOPHILA. Double. Beautiful, best for cutting..	.20		
3812	HIBISCUS. Mallow Marvels. Burpee's Giant Mixed..	.10		
3822	HOLLYHOCKS. Double Mixed. Very beautiful10	.40	
3828	HOLLYHOCKS. Single Mixed. Very free blooming	.10	.40	
3826	HOLLYHOCKS. Allegheny. Single and semi-double with fringed edges. Mixed colors10	.30	
3803	HELENIUM. Riverton Beauty. Yellow flowers. 4 ft.	.20		
3829	IBERIS. Sempervirens. Hardy candytuft.....	.15		
3842	LUPINES. Mixed, white, blue, pink and rose.....	.10	.25	
3950	LUPINES. Improved Hybrids. Mixed15		
3073	MYOSOTIS or FORGET-ME-NOT. Alpestres. Blue Basket. The darkest blue. Compact. Biennial10		
2074	MYOSOTIS. Palustris Semperflorens. Sky blue. Blooms all Summer. Biennial15		
3851	ORIENTAL POPPY. Large scarlet flowers. The most showy of all. 2 to 3 feet.....	.10		
3847	ORIENTAL POPPY. Oriental mixed. New shades	.10		
3870	PYRETHRUM. Roseum. One of the most graceful flowers. Rose, pink and white. Early.....	.10		
3873	RUDBECKIA PURPUREA. Blooms all summer. Purplish daisy-like flowers. Fine for cutting15		
3876	SCABIOSA. Caucasia. 2 ft. Soft, lavender blue..	.15		
3892	SWEET WILLIAM. Giant Double Mixed. All colors	.10		
3884	SWEET WILLIAM. Single Mixed. Perfection.....	.10		
3879	STATICE. Latifolia. Purplish blue flowers.....	.10		
3882	STOKESIA. Cyanea. Hardy aster. Fine for Summer	.10		
4027	TRITOMA. New Hybrids. Various colored spikes..	.25		
3896	VIOLA CORNUTA. Mixed colors. Everblooming ..	.10		
3894	WALLFLOWER. Fine, double mixed. Sweet scented	.15		

We make a specialty of Perennial Plants. Would be pleased to have you visit our gardens. Make your selections from growing plants.

Can get any other Perennial seed that you might want at very short notice. Also can get larger quantities if you so desire.

CLIMBING FLOWERS AND VINES

No.		Pkt.	¼ Oz.	Oz.
2906	BALLOON VINE. Balloon-like seed pods	\$.10		
2923	CYPRESS VINE. Mixed. Fern-like foliage....	.10		
2912	CARDINAL CLIMBER. Brilliant. 15 ft.....	.15		
2987	MOONFLOWER. Heavenly Blue. Fine15		
3021	MORNING GLORIES. Burpee's Best Mixture	.10	\$.10	\$.25
3028	MORNING GLORIES. Mixed Japanese. Largest	.10	.15	.35
3030	MIXED VINE SEEDS. Will make a quick cover	.10	.20	

Bird Houses and Feeding Stations

We have stocked in a nice assortment of Rustic Bird Houses and Feeding Stations. Priced very low considering their good workmanship and material. Only \$1.25 each.

GERANIUMS

We have the finest assortment of Potted Geraniums we ever had. Large, strong plants in bud and blossom. Potted in 3 and 4-inch pots.

These very best kinds at 25c Each; \$2.50 per Doz. Smaller plants at 15c Each; \$1.50 per Doz. and 20c Each; \$2.00 per Doz. Extra large plants at 35c to 50c Each.

ALPHONSE RICCARD. Bright vermilion scarlet.

BEAUTE POITEVINE. Fine, salmon pink.

FIAT. Dark salmon pink. Brilliant. Best blooming.

LA FAVORITE. Large double white.

MARTHA WASHINGTON. Large type.

POINSETTIA FLOWERED. New. Something different. 40c Each.

IRVINGTON BEAUTY. New. Free blooming. Fine clear pink.

MICHELL'S SENSATION. New. Best red.

RADIO RED. A very bright red. Very free.

S. A. NUTT. Rich dark crimson. Most popular of all.

Will have other kinds, also Lemon Verbena, Heliotrope and other seasonable plants. See page 37 for other bedding plants.

CUT FLOWERS

We strive to have a good assortment of Cut Flowers always on hand or can get them at short notice. Carnations, Roses, Snapdragons, Sweet Peas, Gladioli, etc., in season.

FUNERAL SPRAYS, WREATHS, PILLOWS, CROSSES, etc. We are prepared to arrange any kind you might desire. Our prices are very reasonable and we deliver if you wish. We guarantee satisfaction.

WEDDING BOUQUETS. We have furnished several weddings with their Bridesmaids, Maid of Honor, and Bridal Bouquets, Shower Bouquets, and all extras.

Flowers from STERLING are a mark of Satisfaction Assured.

FLOWERING PLANTS — ANNUAL

Grown from the Best Seed obtainable. See Flower Seeds for further descriptions. Nice transplanted plants.

One plant Crown of Gold Marigold given with each \$1.00 worth of plants bought. Ask for it.

	Doz.	3 Doz.	100
ASTER. Queen of the Market. Wilt resistant.....	\$.40	\$1.00	\$2.50
Crego Giants. Wilt resistant.....	.40	1.00	2.50
Royal or Early Branching. Wilt resistant..	.40	1.00	2.50
Giant Branching. Wilt resistant.....	.40	1.00	2.50
Giant Astermums. Mixed colors40	1.00	2.50
AGERATUM. Blue Cap and Blue Ball40	1.00	2.50
BLUE EYED AFRICAN DAISY50	1.40	3.50
BLUE LACE FLOWER50	1.40	3.50
CALENDULA. Mixed, Orange Giant and Sunshine	.40	1.00	2.50
COSMOS. Early. Double Flowered or Crested.			
Crimson, pink and white; also Burpee's Sensation..	.50	1.25	2.50
Late flowering, single mixed.....	.30	.75	2.00
Large Early Flowering, single mixed.....	.30	.75	2.00

FLOWERING PLANTS—ANNUAL—*Continued*

	Doz.	3 Doz.	100
CENTAUREA. Double Cornflower. Blue or mixed ..	\$.40	\$1.00	\$2.50
CARNATION and DIANTHUS. Best Mixtures40	1.00	2.50
GAILLARDIA. Double. Mixed colors.....	.40	1.00	2.50
LARKSPUR. Double. Mixed colors. Giant Imperial..	.40	1.00	2.50
LOBELIA. Crystal Palace and Gracilis, 5c Each.....	.50		
LOBELIA. Pumila. Blue. Green leaves50		
MARIGOLD. Tall African. Orange All Double.....	.40	1.00	2.50
Lemon. All Double.....	.40	1.00	2.50
Crown of Gold. New. Fine50		
Dwarf French. Golden Ball.....	.40	1.00	2.50
Dwarf French. Harmony. Fine40	1.00	2.50
PANSY. Mixed Giants. Best strains50	1.40	3.00
PETUNIA. Fine for Window Boxes, Hanging Bas- kets, or Bedding. Rosy Morn, Rose of Heaven, Elks Purple, Pink Glory, Blue Wonder and Mixed colors40	1.00	2.50
BURPEE'S DOUBLE, GIANT FLUFFY RUFFLES and others. Wonderful new ruffled and double Giants. All colors, 10c Each; three for 25c.....	.80		
PHLOX DRUMMONDI. Best mixed colors.....	.40	1.00	2.50
SALPIGLOSSIS or VELVET FLOWER. Mixed....	.50	1.40	
SCABIOSA. Pin Cushion Flower. Mixed50	1.40	
SNAPDRAGONS. Burpee's Majestic and Super Giant. Rust Resistant mixtures50	1.40	
STRAWFLOWERS or EVERLASTINGS. Finest mixed. Pick before fully opened for Winter.....	.40	1.00	2.50
SALVIA. America Free blooming. Fine for border	.50	1.40	3.00
Bonfire. Compact bush, scarlet50	1.40	3.00
SALVIA PATENS. Clear Blue. Fine50		
STOCKS. Dwarf Double. Mixed colors. 10 weeks50	1.40	
TORENIA. Fournieri. Blue flowers50		
TWINSPUR. A beautiful Annual. Pink50		
VERBENA. Giant Mixed, Lavender, Rose, Red or Venus. The new compact Copper-Pink50	1.30	
ZINNIA. Best Dahlia and Giant Flowered sorts. Separate colors or mixed.....	.40	1.00	2.50
Tom Thumb and New Cupid50	1.25	

Will have a full supply of all the above and many more Annual Flower Plants. Come look our supply over.

Flower Plants by Parcel Post: Add 8 cents per Doz.; 15 cents per 3 Doz., to above prices, if you want your plants sent by Parcel Post.

PERENNIAL PLANTS

One Plant of Heuchera Hybrids given free for each \$1.00 worth of Perennial Plants purchased of us. Ask for it.

Our plants are suitable for your Hardy Border or your Rock Garden. They are grown from the best seed procurable and the most popular sorts. Take care of them and they will bloom for many years. Dig the bed deep, enrich with well-rotted manure, keep clean and give protection in the Winter. Nice plants, transplanted, well rooted. Top dress with Bone Meal, Vigoro or Sheep Manure.



PERENNIAL PLANTS—*Continued*

	Each	Doz.
ANCHUSA. Italica Dropmore. 3 to 5 ft. Blue flowering..	\$.25	\$2.50
ANCHUSA. Myosotidiflora. Good in shady places. Blue Forget-Me-Not flowers in May. 12 in.30	3.50
ANEMONE. Hupehensis. Dainty mauve-rose flowers. 12 in. August to November25	2.50
AGROSTEMMA. Coronaria. Mullein Pink. June and July	.15	1.50
AQUILEGIA. Cœumbine. Long Spurred Hybrids. Blue, Pink and Crimson Star. Mixed or separate colors25	2.50
AQUILEGIA. Long Spurred Hybrids. Smaller plants15	1.50
ALYSSUM. Saxatile. Basket of Gold. Does well in sunny positions. Large plants. Fine for Rock Gardens25	2.50
ALYSSUM. Argenteum. 12 in. Blooms all Summer25	2.50
ARMERIA. Formosa. Sea Pink25	2.50
ASTER (Hardy). Blue and Red. August and Sept.25	2.50
ASTER. Mauve cushion and Daphne. Fine. Late Fall.30	
ASTER. Alpinus rubra. Rose-purple flowers. 6-10 in. May and June. Plant in full sun20	
BELLIS. Perennis. English Daisy. Rose, pink, white05	.50
BOLTANIA. Latisquama. 5-6 ft. pink, July to Sept.....	.25	
CARNATION. Double Mixed. Hardy. Fragrant25	
CALLIRHOE. Poppy Mallow. Trailing15	1.50
CAMPANULA. Carpatica. Pale blue flowers. June-October	.25	2.50
CAMPANULA. Single, Double, and Cup and Saucer. Pink, blue, and white. Large plants25	2.50
CENTAUREA. Macrocephala. Yellow. Late25	2.50
CENTAUREA. Montana. Perennial cornflower. 2 ft. Blue	.25	2.50
CERASTIUM. Tomentosum. Snow in Summer. May25	2.50
CHINESE LANTERN PLANT. Very ornamental15	1.50
COREOPSIS. Grandiflora. Single yellow flowers.....	.15	1.50
DORONICUM. Leopard's Bane. Large yellow flowers15	1.50
DAISY. Anthemis Kelwayi. Fragrant yellow flowers.....	.10	1.00
DAISY. Double Shasta and Early Shasta. New25	2.50
DAISY. Shasta, Alaska, single and Floradale, double.....	.25	2.50
DICENTRA. Exima. Dwarf Bleeding Heart. Pink35	

PERENNIAL PLANTS—*Continued*

	Each	Doz.
DICENTRA. Spectabilis. Bleeding Heart. Large clumps ...	\$.50	\$5.00
DIANTHUS. Dwarf mixed double20	2.00
DIANTHUS PLUMARIUS. Double Mixed.....	.20	2.00
DELPHINIUM. Belladonna and Bellamosum15	1.50
DELPHINIUM. Dreams of Beauty. Delicate shades of blue	.25	2.50
DELPHINIUM. Sterling's Hybrids. A fine mixture15	1.50
DELPHINIUM. Wrexham Hybrids, Iceberg, Chinese and others. Extra large clumps, 50c25	2.50
EUPATORIUM. Hardy Ageratum. White and blue20	2.00
FOXGLOVE or DIGITALIS. Giant Shirley. Mixed colors.	.20	2.00
FUNKIA. Plantain or Day Lily. Blue and white25	2.50
GAILLARDIA. Blanket Flower. Beautiful large flowers. Yellow tips with crimson centers. Also clear yellow25	2.50
GYPSOPHILA. Baby's Breath. Single and Double.....	.20	2.00
GYPSOPHILA. Bristol Fairy. Finest double. Grafted....	.50	
GYPSOPHILA. Repens. Trailing form of Baby's Breath ..	.20	2.00
GEUM. Mrs. Bradshaw. Rich orange-red blossoms15	1.50
HELIANTHEMUM. Mixed colors. June20	2.00
HEUCHERA. Coral Bells. Red. Pale Pink. Beautiful25	2.50
HEUCHERA. Hybrids. Mixed coral bells15	1.50
HIBISCUS. Large flowers. Red, pink and white. Mixed10	1.00
HIBISCUS or MALLOW. Extra large clumps.....	.50	
HOLLYHOCK. Double. Pink, yellow, red, maroon25	2.50
HOLLYHOCK. Single, mixed and Alleghany mixed20	2.00
IBERIS. Sempervirens. Hardy Candytuft. White flowers ..	.20	2.00
IRIS. Pumila. Dwarf Iris. 3 colors. April25	2.50
LAVENDULA. Vera (English Lavender). 18 in. Fragrant	.25	2.50
LOBELIA. Cardinalis. Flaming Scarlet. July to Sept.25	2.50
LIATRIS. Spicata. Tall lavender spikes. Fine25	2.50
LINUM. Pirene. Graceful blue flower. Large clumps25	2.50
LINUM. Flavum. Yellow. Blooms late25	2.50
LUPINES. White, rose and blue, mixed25	2.50
LUPINES. Hybrid. Sweet scented. Fine20	2.00
LYCHNIS. Chalcedonica. Vivid scarlet. July and August ..	.15	1.50
LYCHNIS. Viscaria. Rose pink. May and June25	2.50
LYTHRUM. Roseum Superbum. Late blooming25	2.50
MYOSOTIS. Alpestris. Deep blue Forget-Me-Not10	.75
MYOSOTIS. Palustris, semperflorens. Everblooming10	.75
PANSY. Burpee's Giant. Mixed colors05	.50
PAPAVER. Oriental Poppy. Large, deep red, salmon red and pink20	2.00
PAPAVER. Nudicaule. Iceland Poppy. Prettiest of all for Rock Gardens or Border. Mixed colors25	2.50
PHLOX. Subulata. Trailing, white and pink25	2.50
PHLOX. Subulata Rosea. Pink. Smaller plants10	1.00
PHYSOSTEGIA. Virginica. July to Oct. Pink and white ..	.25	2.50
PLATYCODON. Chinese Bellflower. Grandiflora. Blooms all summer. Blue 1½ ft. Fine25	2.50
PENTSTEMON. Ovatus. Red, pink and blue25	2.50

PERENNIAL PLANTS—*Continued*

	Each	Doz.
POLYMONIUM. Coeruleum. Jacob's Ladder. Blue and white	\$.25	\$2.50
POLYMONIUM. Richardsoni. Dwarf blue	.25	2.50
POTENTILLA. Five Finger. July to Sept.	.25	2.50
PRIMULA. Cortusoides. Deep rose. Early summer	.25	2.50
PRIMULA. Polyanthus. Munstead strain. Mixed. Early	.15	1.50
PYRETHRUM. Painted Daisies. Mixed. White, rose and red	.25	2.50
RUDBECKIA. Newmanni. Black-eyed Susan	.25	2.50
RUDBECKIA. Purpurea. Purple Daisies. Large plants	.25	2.50
SALVIA. Azurea. 3 ft. August. Large clumps. Blue	.25	2.50
SAXIFRAGA. Magasea Hybrids. Rose pink	.20	2.00
SCABIOSA. Caucasica. Blue flowers from June to Sept.	.25	2.50
SEDUM. Spectabile. Tall, pink, large leaves	.20	2.00
SEDUM. Acre. Low spreading, yellow blossoms	.20	2.00
STOKESIA. Cornflower Aster. June to October. Large	.25	2.50
SWEET ROCKET. Sweet scented. White and purple	.15	1.50
SWEET WILLIAM. Mixed colors. Single and double	.20	2.00
SWEET WILLIAM. Dark red.	.20	2.00
SAPONARIA. Pink. Spreading. For Rock Gardens	.25	
THALICTRUM. Two of the best kinds. June to August	.25	2.50
TRITOMA. Pfitzeri. Hardy. Red-hot Poker plant. Large	.25	2.50
TROLLIUS. Orange Globe. Large globe flowers. Fine	.30	
THYMUS. Citriodorous. Lemon yellow Thyme. June	.30	3.00
TUNICA. Saxifraga. Grass-like foliage. Pink flowers	.10	1.00
VERONICA. Maritima and Spicata. Blue spikes. July	.20	2.00
VALERIANA. Rubra. Mauve rose, June to October	.25	2.50
VALERIANA. Officinalis. Garden Heliotrope. Sweet	.25	
VIOLA. Apricot, yellow, Blue Perfection, Butterfly	.10	1.00
VIOLA. Cornuta. Mixed colors. Large clumps	.20	2.00
VIOLA. Jersey Gem. Rich violet. Blooms all Summer	.10	1.00
VIOLA. Rosina. New. Very sweet. Pink flowers	.25	
VIOLET. Single. Sweet. Large clumps	.15	1.50
VIOLET. Double. White and blue	.25	2.50
WALLFLOWER. German. Mixed. Fragrant	.10	1.00
WALLFLOWER. Cheiranthus. Siberian. Orange	.10	1.00

Have other kinds of Perennials growing in my beds. Come and look them over.

Postage on Perennials, 12c per dozen extra, on small plants; 25c per dozen on large plants.

CANNA BULBS

ENCHANTRESS. Finest Pink. 2½ to 3 ft. Green leaves. 10c each; \$1.00 per doz.

KING HUMBERT. Large orange scarlet flowers with heavy bronze foliage. 4 ft. tall. Each, 10c; per doz., \$1.00.

YELLOW KING HUMBERT. Bright yellow flowers spotted with orange, bronze foliage. A few will revert to the red blossoms. 4½ ft. Each, 10c; per Doz., \$1.00, Postpaid.

THE PRESIDENT. Large, bright red flowers, with green foliage. One of the best. 4 ft. tall. Each, 10c; per Doz., \$1.00 Postpaid.

POTTED PLANTS at double the above prices.

HARDY CHRYSANTHEMUMS

We specialize in Hardy Chrysanthemums. Try a few of the new Korean varieties. Why not come and look over our display in the Fall and select the kinds you like best.

- AMBER STAR. Shaggy, semi-double. Buff.
 AMELIA or PINK CUSHION. New. Early Dwarf.
 BARBARA CUMMING. Yellow shading to bronze. Early.
 BETTY WATKINS. Red center, turning yellow.
 CAVALIER. Single. Rich vermilion-red. New.
 ENCHANTRESS. Large, semi-double. Clear rose.
 ERMALINDA. Lavender-pink, pompom. Fine.
 GRENADIER. Large, crimson-red. Semi-double.
 GRANNY SCOVILL. New, extra large, double flowers. Coral bronze.
 EARLY BRONZE. Extra early. Bronze yellow. Fine.
 GOLDEN OAK. Large, glowing yellow. Midseason.
 INDIAN MAID. Single. Orange terra-cotta.
 JEAN CUMMING. Large, pure white. Fine.
 JEAN TREADWAY. Distinct and charming pink. Early.
 MOONLIGHT. Large pale blush, single.
 PERSIA. Deep rosy carmine. Semi-double.
 PRINCESS. Large single white. Yellow center.
 RED BUTTON. Small red.
 REDSKIN. Single. Orange scarlet. Unusual.
 R. MARION HATTON. Early, large yellow pompom.
 SUNBRIGHT. Golden yellow. Single.
 THE TORCH. Orange scarlet. Semi-double.
 UNIQUE. Carmine-rose. Semi-double.
 VIVID. Rosy crimson. Early, free blooming. Double.
 WHITE BUTTON. Small white.
 WHITE CHARM. Large white, yellow center.
 WHITE WARRIOR. Dwarf, branching, early. One of the best.
 YWARREN. Clear yellow. Small.
 Price 20c Each; \$2.00 per Doz. 15 assorted kinds, 1 Each, for \$2.50.

NEW KOREAN HYBRIDS.

These new creations are worthy of your trial.

- APOLLO. Bronze, red and gold. Single.
 CERES. Chamois-yellow and coppery gold. Single.
 DIANA. Lilac rose and salmon. Single.
 DAPHNE. Clear daphne pink. Single. The best of all.
 Any of the above at 25c Each, \$2.50 per Doz. assorted.
 ROMANY. Glowing red. Bronze tone. New double. 50c Each.
 INDIAN SUMMER. Vivid orange. New double. 50c Each.
 VENUS. Vivid rose pink. Beautiful. 35c Each.
 ASTRID. New. Early dwarf pink. Beautiful. 35c Each.

All the above prices are postpaid.

GLADIOLI BULBS

We list the very best kinds that we grow. Have other kinds on hand and can get you other kinds desired.

Large No. 1 Bulbs.

Our Bulbs are all treated with Naphaline Flakes to prevent attack from thrip.

AFLAME. Large, soft red. Fine.

ALBATROSS. Large massive white. Tall.

BETTY NUTHALL. Orange pink. Very large.

COMMANDER KOEHL. Massive crimson red. Tall.

CORYPHEE. Clear pink. Extra large.

GIANT NYMPH. Large salmon rose.

KIRCHOFF'S VIOLET. Deep velvety blue. Large.

MARMORA. Smoky lavender. Fine.

MINUET. Large pinkish lavender. Tall.

MME. MOUNET-SULLY. Creamy white with red throat.

MRS. LEON DOUGLAS. Coral rose. Beautiful. Large.

PFITZER'S TRIUMPH. Scarlet. Extra large.

PICARDY. Flesh pink. Largest of all.

PRIMROSE PRINCESS. Finest amber yellow.

SHASTA. Pure white. Very large.

W. H. PHIPPS. Clear pink. Large.

YVONNE. Tall. Blush white with cerise spot.

The above is as fine a collection as we have seen. Priced at 10c each; 75c per doz. 1 each of 12 kinds for \$1.00; 3 each for \$2.50. Prepaid. Each kind kept separate and correctly labeled.

Have cheaper kinds if you want them. Ask us.

STERLING MIXTURE. A mixture of all the best kinds and many other varieties. Beautiful. Per Doz., 50c; per 100, \$3.50 Postpaid.

STANDARD MIXTURE. A well balanced mixture of all colors. Large bulbs. Use them in any quantity. They will bloom and satisfy. Per Doz., 30c; per 100, \$2.25 Postpaid.

We will have many other kinds in our field. You are invited to come look them over. Cut Flowers sold very reasonable, wholesale or retail.

NAPHALINE FLAKES. For dusting bulbs in storage, per Lb., 20c; 10 Lbs., \$1.50.

DAHLIA BULBS

STERLING MIXTURE. Containing a mixture of Queen of the Garden Beautiful, Mammoth Champion, Treasure Island, Mabel Goodacre, Dr. J. Carmen, American Beauty, Salmon Supreme, Watchung Sunset, Watchung Chief and Trentorian. All very choice varieties. Per Bulb, Strong eyes, 25c; per Doz., \$2.50. Postpaid. Separate colors at same price.

BLUE BERRY BUSHES

The new, extra large fruiting kinds: Pioneer, Rubel and Cabot. 10 to 12 inch plants, \$1.25 Each; 15 to 18 inch, \$1.75 Each; 20 to 24 inch, \$2.25 Each. Plant 5 Pioneer, 4 Rubel and 1 Cabot for best results in pollenization.



Gladioli Bulbs and Chrysanthemums. Note the size of the bulbs.

IRIS — GERMAN, DWARF, and JAPANESE

Iris can be set in early Spring right after blooming and in September and October. We have 30 kinds of Iris in our collection for you to choose from. Look them over when in bloom, and make your selection.

GERMAN IRIS. Per Clump of 3 to 5 Rhizomes, 15c; Per Doz., \$1.50.

DWARF IRIS. Dark purple. 20c per clump.

JAPANESE. Blooms after German Iris are through. Purple, tall.

Per Clump of 3 to 5 Rhizomes, 15c; per Doz., \$1.50

SIBERIAN. White and blue. Late. Each 25c.

NARCISSUS or DAFFODILS

Plant the bulbs in October or November. Select them in May.

Emperor, Empress, Glory of Sassenheim, King Alfred, Spring Glory, Vanilla, Barri Conspicuous, Laurens Koster.

Double nosed bulbs of all kinds above, mixed or separate. Will surely flower next Spring. 10c Each, \$1.00 per Doz., \$5.00 per 100. Ready in Fall.

For naturalizing—Single nose bulbs at Special Bargain Price of \$2.00 per 100; \$10.00 per 1000.

Place your orders in the Spring.

Look our field over in May. You are always welcome.

Cut Flowers from field, 25c per Doz., \$1.50 per 100.

Peruvian Daffodil. Plant like dahlias. 25c each, \$2.50 per doz.

HYACINTH, CROCUS and TULIP BULBS

Will have a good supply of Spring flowering bulbs in the Fall and will be pleased to book your orders for Fall delivery. Prices will be right for No. 1 sure blooming bulbs.

CLIMBING ROSES

All my Roses are 2 to 5 years old.

	Each
ALBERTINE. Large coppery salmon.....	\$.60
AMERICAN PILLAR. Extra large bushes.....	1.50
BLAZE. The new Patented everblooming. Paul Scarlet Climber..	1.00
CRIMSON RAMBLER. Standard dark red clusters50
DOROTHY PERKINS. Large clusters of beautiful pink flowers	.50
DR. VAN FLEET. Long pointed buds. Flesh pink.....	.60
EMILY GRAY. Pointed buds. Beautiful yellow.....	.75
GOLDEN CLIMBER. New. Finest yellow climber. Patented..	1.50
MARY LOVETT. A very fine white climber60
MARY WALLACE. Large, pink flowers. Beautiful.....	.75
NEW DAWN. An everblooming Dr. Van Fleet - Patent No. 1 ..	1.50
PAUL'S SCARLET CLIMBER. One of the best.....	.60
SILVER MOON. Pure white, large flowers.....	.75
TAUSENSCHON. Soft pink, no thorns, extra large plants	1.50

Have larger plants in most of the above at higher prices.

HYBRID TEA ROSES

Two-year-old plants, potted and kept in our frames, all ready to grow and bloom. These Roses bloom in June, and every month throughout the Summer and Fall. Do not confuse these fine plants with the cheap bench plants sold for little or nothing. Use our Rose Dust for Dry Dusting, and "Fungtrogen", "Black Leaf 40%" or "Tri-ogen" for Liquid Spraying.

AMELIA EARHART. Large, fragrant, yellow. Each \$1.25.

COUNTESS VANDALL. New. Best rose at World's Fair. Patented. Coppery Gold. Long pointed buds. Each \$1.00.

DAME EDITH HELEN. Finest pink. Strong grower.

EDITH NELLIE PERKINS. Orange pink and gold. Fine.

ETOILE DE HOLLANDE. The finest dark red. Great vigor.

GOLDEN DAWN. Sunflower yellow. Healthy.

JOANNA HILL. Yellow center, buff petals.

KAISERIN AUGUSTA VICTORIA. Best white. Fragrant.

MARGARET MCGREDY. Buds large. Finest Oriental red.

MARY HART. New Red Talisman. \$1.00.

MISS ROWENA THOM. Brilliant rose pink. Large, fragrant.

MRS. AARON WARD. Free blooming. Indian yellow. Sweet.

PRESIDENT HERBERT HOOVER. Scarlet, orange to gold.

RADIANCE. Brilliant, carmine-pink. Blooms through hot weather.

REV. F. PAGE ROBERTS. Copper red buds. Opens golden yellow.

Price of any of the above 75c Each. Assortment of 1 Each of 10 of the above \$7.00. Amelia Earhart, Countess Vandall and Mary Hart excepted. Have some kinds with bare roots, not potted, at 50c Each. Come look them over.

BABY RAMBLERS or POLYANTHA ROSES

CAMEO. New Polyanthus. Shell pink and salmon.
 CECIL BRUNNER. Sweetheart rose. Light pink.
 GOLDEN SALMON SUPERIOR. New. Beautiful. Salmon pink.
 GRUSS AN AACHEN. Large, light pink.
 KIRSTEN POULSEN. Bright scarlet. Clusters.
 RED ECHO. Brilliant red. Dwarf Tausendschoen.

Price 60c to \$1.00 Each, according to age and size.

PEONIES

We have a nice assortment of Peonies, three and four-year old clumps. Select your color when in bloom. They can be dug and transplanted at any time if you take a whole clump. Per clump from 50c to \$1.50 according to size. Three eye divisions in the Fall, 35c Each, 3 for \$1.00.

HARDY PHLOX

One of the Best Summer-Blooming Perennials.

We have a fine assortment of Hardy Phlox 2 and 3-year-old plants.

ALBERT LEON SCHLAGETER. Strong, healthy. Red. Fine.
 ANTONIN MERCIE. Beautiful lavender. Tall.
 BEACON. Cherry red. Fine.
 BRIDESMAID. White, carmine eye. Very beautiful.
 COLUMBIA. New. Patented. Finest pink. 50c each.
 COMMANDER. Brilliant dark red, darker eye.
 HAUPTMAN KOEHL. Dark blood red.
 ENCHANTRESS. Clear pink. Fine.
 FIRE BRAND. Bright scarlet. Large trusses.
 MISS LINGARD. Best white. Early, long blooming.
 MRS. JENKINS. Dwarf white.
 PAINTED LADY. Silver pink, cherry red eye.
 SALMON GLOW. New. Beautiful. Salmon pink.
 THOR. Soft, ruddy salmon, mottled center. Very fine.

All the above large clumps 25c Each; \$2.50 per Doz.

TIGRESS. New Red. See back cover. 50c Each. Potted.

CLIMBING PLANTS and VINES

	Each
AMPELOPSIS VEICHHI, or Boston Ivy. Best for chimneys and walls. Large 2-year-old plants	\$.30
ARISTLOCHIA SIPHO. Dutchman's Pipe. Large plants.....	1.00
BIGNONIA RADICANS. Trumpet Vine. Large 2-year plants.	.50
BITTER SWEET. Orange berries. Fall and Winter.....	.50
BITTER SWEET. Very large plants.....	1.00
CLEMATIS PANICULATA. Blooms freely in August and September. Pure white flowers. Strong plants.....	.50
CLEMATIS PANICULATA. Large plants.....	1.00
CLEMATIS JACKMANI. Beautiful purple blossoms.....	.90
ENGLISH IVY. Greenish purple leaves. Hardy. Per Doz., \$2.50	.25

CLIMBING PLANTS and VINES—*Continued*

	Each
ENGLISH IVY. Extra large plants	\$.40
HONEYSUCKLE. Hall's Japanese. Very fragrant.. ..	.50
HONEYSUCKLE. Tartarica. Bush form.60
HONEYSUCKLE. New Everblooming. Orange scarlet.....	.60
WISTERIA. Purple. Large grafted plants. 2 years and over..	.90
WISTERIA. White. Beautiful. Grafted90

POTTED VINES FOR WINDOW BOXES

	Each	Per Doz.
GERMAN IVY. Bright green leaves. Quick growing....	\$.25	\$2.50
GERMAN IVY. Smaller plants.....	.15	1.50
VARIEGATED VINCA. Green and white leaves. One of the best for Window Boxes. Smaller plants 15c.....	.25	2.50
ICE PINK. Trailing vine, pink flowers.....	.25	2.50
WANDERING JEW. Very rapid growing.....	.15	1.50
VARIEGATED ENGLISH IVY. Beautiful30	
JAPANESE GRAPE IVY. New. Bright green.....	.30	
TRAILING LOBELIA. Blue flowers.....	.10	1.00
ENGLISH IVY. New. Self Branching. Fine30	3.00

BEDDING PLANTS

We will have a larger supply than ever of Bedding Plants, such as below. Best kinds, most suitable for this section.

AGERATUM. Dwarf, blue. Each, 5c; per Doz., 50c.

COLEUS. Assorted colors. Each, 15c; per Doz., \$1.50.

FUCHSIAS. A fine assortment. Each, 25c; per Doz., \$2.50.

LANTANAS. Four of the best and showiest kinds. 3 in. pots, 15c Each; \$1.50 per Doz.; 4 in. pot, 25c Each; \$2.50 per Doz.

LOBELIA. Crystal Palace. Dark blue. 5c and 10c Each.

GERANIUMS. Eight of the best kinds and colors. 15c to 40c Each.

NURSERY DEPARTMENT**HEDGE and ORNAMENTAL SHRUBS and BUSHES**

JAPANESE BARBERRY makes a beautiful hedge or single specimen plants. Red berries in Fall and Winter.

Strong two-year-old plants, 8-10 inches. Each, 10c; per Doz. \$1.00; per 100, \$8.00.

Strong two-year-old plants, 12-18 inches. Each, 15c; per Doz., \$1.50; per 100, \$12.00.

Strong three-year-old plants, 2-3 ft. Each, 25c; per Doz., \$2.50; per 100, \$20.00.

RED BARBERRY. New Red Leaved Japanese. Rich, lustrous, bronzy-red all Summer, changing to vivid orange, scarlet and red shades in the Fall. Must be set in full exposure to the sun.

Strong two-year-old plants, 15-18 inches; Each 30c; per Doz., \$3.00.

Strong three and four-year-old plants. 60c to \$1.00 Each.

PYRAMIDAL BARBERRY. New Upright True Hedge Columberry. Nice plants, 15-18 inch, 45c Each; \$4.75 per Doz.



Our truck with a load of White Birch and other ornamental trees ready to set on an estate.

HEDGE and ORNAMENTAL SHRUBS and BUSHES—*Continued*

PRIVET, AUREAM. Yellow leaved. Nice well branched plants, 2-3 ft. Each 50c; per Doz., \$5.00.

PRIVET, IBOLIUM. The most hardy for this section. 12-15 in. Each 10c; per Doz., \$1.00; per 100, \$7.50.

PRIVET, CALIFORNIA. The standard for hedges. Can be trimmed to any desired height, or shape.

Two-year-old plants, 12-18 inches, Each, 5c; per Doz., 50c; per 100, \$4.00.

Three-year-old plants, 18-24 inches, Each, 8c; per Doz., 80c; per 100, \$6.00.

Four-year-old plants, 3-5 ft., very bushy, Each, 12c; per Doz., \$1.25; per 100, \$8.00 to \$10.00.

Extra large plants, 15c to \$1.00 Each, according to size.

BOXWOOD EDGING. Fine husky plants. 6-8 inches, 25c Each; \$2.50 per Doz.; 8-12 inches, 80c Each; \$7.50 per Doz.; 18-30 inches, \$1.50 to \$2.50 Each.

JAPANESE SPURGE. Best ground cover. Per root, 10c; per clump of about one square foot, \$1.00.

FLOWERING and EVERGREEN SHRUBS

These are large, well-developed clumps, grown in our nursery from 2 to 3 years. Smaller shrubs just stocked in, at much lower prices.

Each

ABELIA GRANDIFLORA. Low growing, nearly evergreen.

Pink blossoms, late. 1 to 2 ft. 75c to \$1.50

ACER PALMATUM ATROPURPUREA. Japanese Red Maple.

Grafted stock. Good color all summer. 18 to 30 in... \$2.25 to 4.50

ALMOND. Double Pink Flowering, early flowering60

ALTHEA. Tree or Bush Form. Red, purple, pink, or white.

Blooms late. Double blossoms. Beautiful60 - 1.25

AZALEA AMOENA SUPERBA. Purple flowers. Evergreen 1.00 - 2.50

FLOWERING AND EVERGREEN SHRUBS—*Continued*

	Each
AZALEA HINODIGIRI. Bright red flowers. Most popular of all. 8-18 in. Nice plants in bloom for Easter in pots	\$1.25 - \$2.75
AZALEA INDICA ALBA. White. Beautiful. 12 to 15 in.	2.00
AZALEA MOLLIS. Yellow flowers before the leaves. 12-24 in.	75 - 2.50
BEAUTYBUSH (KOLKWITZA AMABILIS). New, pink, bell- like flowers. Late blooming. 2-4 ft.50 - 1.00
BOXWOOD. Nice bushy plants, sheared. 24-36 in.	1.50 - 2.50
BUDDLEIA MAGNIFICA. Butterfly Bush. Blooms all Summer. Cut back every Spring. Different sizes and kinds50 - 1.00
BUDDLEIA ILE DE FRANCE. New. Deep purple. Fine.75
BUDDLEIA FARQUHAR. Rose with yellow center.75
CALLUNA. Scotch Heather. 10-12 in.75
CERCIS CANADENSIS. Red Bud or Judas Tree. 6 ft.	1.50
CORNUS FLORIDA. White-flowering Dogwood. 3-5 ft.	1.50 - 3.00
CORNUS FLORIDA RUBRA. Red-flowering. 2-3 ft.	1.50 - 3.00
CORNUS SIBIRICA. Red-barked Dogwood. 3-5 ft.60 - 1.00
PIERIS JAPONICA. Andromeda. Fine plants. Evergreen	3.00
COTONEASTER HORIZONTALIS. Dwarf, box-like green leaves, bright red berries in the Fall. 12-15 in.90 - 1.25
COTONEASTER. Franchetti. Tall. Orange red fruit.	1.25
CRAB APPLE. Betchel's and Falkner Farm. 4-5 ft.	1.50
CYDONIA JAPONICA. Red-flowering Quince. 2-3 ft.60
DAPHNE CNEORUM. Fragrant, pink flowering. Flowers in Spring, Summer and Fall. 12-15 in.90
DAPHNE CNEORUM. Fine for Rock Gardens. 15-18 in.	1.50
DEUTZIA CRENATA. Pride of Rochester. 3-5 ft.50 - 1.00
DEUTZIA GRACILLIS. Low-growing, white. Beautiful.	50 - 1.00
DEUTZIA GRACILLIS ROSEA. Low-growing. Pink.60
EUONYMOUS ALATUS. Winged Euonymous. Fine. 2-3 ft.60
FORSYTHIA FORTUNEI. Early yellow blooms50 - 1.00
FORSYTHIA INTERMEDIA. Earliest Golden Bell50 - .75
FORSYTHIA SUSPENSА. Weeping Golden Bell50 - .75
HYDRANGEA PANICULATA GRANDIFLORA. Large white, pointed blossoms, turning pink. Nice bushes60 - 1.00
HYDRANGEA ABORESCENS GRANDIFLORA. Pure white60 - 1.00
HYPERICUM or ST. JOHNSWORT. Yellow blossoms	1.00
KALMIA LATIFOLIA. Mountain Laurel. 1½-2 ft.	2.00
ILEX CRENATA. Japanese Holly. 12-18 in.	1.00
LABURNUM or GOLDEN CHAIN. Tree-like shrub. Long yel- low blooms. Large trees.	1.50
LESPEDEZA FORMOSA. Rosy purple clusters of flowers in September. A beautiful new shrub. 2-year old75
LILAC. Common purple. Nice plants.60
LILAC. White, sweet scented. Double.75
LILAC. French. Named and mixed varieties.	1.00
LONICERA TARTARICA. Bush Honeysuckle. Red berries75
MAHONIA AQUIFOLIUM. Hollygrape. A dwarf evergreen shrub, with holly-like leaves. Beautiful. 18-24 in.	2.00
PHILADELPHUS AUREA. Yellow leaves, very ornamental.80
PHILADELPHUS CORONARIUS. Mock Orange. Syringa60 - 1.00

FLOWERING and EVERGREEN SHRUBS—*Continued*

	Each
MAGNOLIA.—See Ornamental Trees.	
PHILADELPHUS VIRGINALIS. Pure white. Large, sweet flowers. Beautiful. 2-4 ft.	\$.50 - \$1.00
PRUNUS PERSICA. Flowering Peach. Double pink blossoms.	.75
PRUNUS SERRULATA. Japanese Cherries. Beautiful. Double.	2.50
JAPANESE WEEPING CHERRY. Beautiful when in bloom..	3.25
PUSSY WILLOW. Earliest sign of Spring. 3-4 ft.....	.50
RED LEAVED BARBERRY. (See Hedge Plants)30 - 1.00
RHODODENDRON CATAWBIENSE. Purple blossoms. Blooming before the Maximum	3-4 ft., \$4.50; 2-3 ft. 2.50
RHODODENDRON MAXIMUM. Pink blossoms. Nice bushy plants. 15-18 in., \$1.75; 3 ft., \$3.50; 3-4 ft.....	4.50
RHODODENDRON HYBRIDS. Deep red blossoms. 24-30 in...	4.50
RHODODENDRON HYBRIDS. 15-24 in. Bushy. Various colors, mostly deep pink to red	1.50 - 3.50
SPIREA ANTHONY WATERER. Rose-pink flowers. Late...	.60
SPIREA BILLARDI. Red spikes. Late.....	.60
SPIREA PRUNIFOLIA. Double Bridal Wreath.....	.60
SPIREA VAN HOUTTEI. Graceful, arching sprays. Like a pure white fountain. 2-5 ft. Bushy.....	.30 - .75
SNOWBERRY, WHITE. Large white berries. 3-4 ft.	1.00
SNOWBERRY, RED. Coral berry. Clusters of red berries..	.60 - 1.00
VIBURNUM CARLESI. Pink, sweet. 18-24 in.75
VIBURNUM PLICATUM. Japanese Snowball. Nice plants.	.60 - 1.00
VIBURNUM RHYTIDOPHYLUM. New evergreen shrub.	1.50 - 3.25
VIBURNUM STERILE. Common snowball. Nice plants. ..	.50 - 1.25
WEIGELA ROSEA. Rose colored flowers. One of the finest shrubs. Blooms around Memorial Day50 - 1.00
WEIGELA EVA RATHKE. Dark red, late blooming50 - 1.00
WEIGELA NANA VARIEGATED. Very ornamental. 1½ ft...	.50

You are invited to come and look our shrubs over, as we are trying out many new kinds every year. The above are large clumps, balled and burlaped. Do not confuse these with the small whips advertised for a song. We have extra large shrubs at higher prices.

ORNAMENTAL and SHADE TREES

	Each
ASH. European Mountain. Scarlet berries. 8-10 ft.	\$2.50
BIRCH. White. Nicely branched. Very ornamental. 8-10 ft....	2.00
BIRCH. Cutleaf Weeping. 6-8 ft.....	2.00
CATALPA BUNGEII or Umbrella Trees. Have a nice lot of these very ornamental trees. 3-4 yr.....	1.25 - 2.50
ELM. Chinese. Very quick growing, ornamental, drought-resistant. 6-10 ft.	1.50 - 2.50
LINDEN. American. Large foliage. Good for lawn. 10-12 ft. ...	5.00
MAGNOLIA. Soulangeana. True pink and white flowered Magnolia. 2-3 ft., \$2.50. Large size	7.00
MAGNOLIA. Soul. Nigra. Deep pink flowers. 4-5 ft.	7.00
MAGNOLIA GLAUCA. Sweet Bay. 3-4 ft.	2.50
MAPLE. Japanese. Beautiful red leaves. Spring, Summer and Fall. Very ornamental. Grafted trees. 18-30 in.....	2.25 - 4.50

ORNAMENTAL AND SHADE TREES—*Continued*

	Each
MAPLE. Norway. The best shade tree there is. 6-8 ft.	\$1.00 - \$2.50
MAPLE. Norway. Larger trees. 8-12 ft.	3.50 - 5.00
MAPLE. Silver. Quick growing. Large. 10-12 ft.	3.50
MAPLE. Sycamore. Large trees with heads cut back.....	3.00 - 15.00
MULBERRY. Weeping. Very ornamental. 3-5 yr. heads	3.00 - 5.00
OAK. Red. Fine for shade and Autumn coloring	3.00
OAK. Pin. Desirable for lawns. Does not rob adjoining ground	3.00
ORIENTAL PLANE. One of the best shade trees for street, salt water exposure, or lawn. 6-10 ft.....	2.50 - 4.00
POPLAR. Lombardy. Quick growing. Upright. 10-12 ft.....	2.50
THORN. Paul's Scarlet. Beautiful trees for specimen. Double scarlet flowers. 5-6 ft.....	2.50
WILLOW BABYLONICA. Weeping. Large well-spread trees. Makes fine setting for a pool. 8-10 ft.....	2.00
WILLOW. Golden. Upright. Yellow bark	2.00

EVERGREENS

What adds to a place more than an Evergreen Setting? We have the Evergreens and would be glad to do your setting. Let us give you our figure. Below is a partial list of our Evergreens.

ABIES CONCOLOR, White Fir. One of the best. Nearly blue in color. 2-5 ft., \$1.50-\$4.50 Each.

ABIES, Balsam Fir. Good shape. Fine for Christmas trees. 3-6 ft. Each, \$2.50 - \$5.00.

ARBORVITAE. American. Common White Cedar. Fine for specimen, hedge or windbreak. 2-2½ ft., Each, \$1.25; 2½-4 ft., Each, \$3.00. Have about 100 ft. hedge, would sell right.

ARBORVITAE. Globe shaped. Dark green. These can be kept trimmed to a perfect ball. Very ornamental. Large 2½x2½ ft., Each \$4.00. Smaller trees, \$1.00-\$2.50.

ARBORVITAE. Pyramidal. Tall, narrow good color. The most popular upright tree for foundation settings. 2-3 ft., Each, 75c-\$1.50; 3-4 ft., Each \$3.00; 4-5 ft., Each \$4.00.

BIOTA AUREA NANA. Dwarf Golden Arborvitae. Good tree for Rock Gardens. 12-15 in., \$1.25; 9-12 in., 90c.

BIOTA ORIENTALIS PYRAMIDALIS. Chinese Arborvitae. A cheaper form of Arborvitae. 2-4 ft., 75c-\$1.50; 4-5 ft., Each \$3.00.

CHRYPTOMERIA JAPONICA LOBBI. Very graceful and effective. 8-10 ft., Each \$10.00; 3-5 ft., Each, \$2.50-\$3.50.

JUNIPERUS EXCELSA STRICTA. Spiny Greek Juniper. Slow growing. 2-3 ft., Each \$1.50-\$2.50.

JUNIPERUS HIBERNICA. Irish Juniper. Tall spire-like, good green. 3-3½ ft., \$3.50; 18-24 in., 75c-\$1.25.

JUNIPERUS PFITZERIANA. Pfitzer Juniper. Broad bushy habit. Fine for Rock Gardens. Gray-green color. 3-4 ft., Each, \$3.50; Smaller trees. Each 75c-\$2.50.

PICEA EXCELSA. Norway Spruce. Fine for Specimen work or hedge, 2-3 ft., \$1.00-\$2.50, according to size. These make fine Christmas trees. Larger trees, \$3.00-\$7.50.

EVERGREENS—*Continued*

- PICEA PUNGENS GLAUCA. Colorado Blue Spruce. The finest tree of all. 12-18 in., Each, \$1.50; 18-36 in., \$2.50-\$5.50; 4-5 ft., \$7.50 to \$15.00 Each. We have some nice specimens. Come look them over.
- PICEA PUNGENS, KOSTERIANA. Koster's Blue Spruce. Fine Blue specimen. 2-2½ ft., Each, \$5.50.
- PINUS THUNBERGII. Black Pine. Vigorous. The best Evergreen for sandy, exposed places, or seaside. 4-5 ft., Each, \$4.50. 2½-3 ft., \$2.50
- PSEUDOTSUGA DOUGLASI. Douglas Fir. Hardy bluish color. From \$1.00-\$5.50, according to size.
- RETINISPORA PLUMOSA AUREA. Golden Plumed Cypress. Fine yellow effect. Grows quickly. 3-4 ft., Each, \$2.00-\$3.50.
- RETINISPORA PLUMOSA. Plumed Cypress. A beautiful, fine-leaved pointed tree that can be kept trimmed to any shape or size. Bright green. 4-5 ft., Each, \$5.00; 2½-3 ft., Each, \$2.00-\$3.50.
- RETINISPORA SQUARROSA VEITCHII. Moss Cypress. Very graceful. Blue-grey. Feathery and dense. \$4-5 ft., \$4.50.
- TAXUS CUSPIDATA. Japanese Yew. Grows medium high, spreading and of a beautiful dark green color. Can be planted in partial shade. 1-1½ ft., Each, \$1.50; 1½-2 ft., \$2.50; 2-3 ft., \$4.00. Smaller trees, 75c-\$1.25.
- TAXUS CUSPIDATA BREVIFOLIA. Dwarf Yew. Darker, closer growing than above. Fine for Rock Garden. 12-18 in., Each, \$1.50; 18-24 in., Each, \$2.00-\$3.00.
- TAXUS HUNNEWELLIANA. New. Round saucer like. 18-24 in., \$1.90-\$2.50.
- TSUGA CANADENSIS. Canada Hemlock. Likes shady places. One of the best for seashore. 2-2½ ft., \$1.50. Small trees, 75c.

We are adding to our Evergreens all the time and advise anyone in the market for good Evergreens to look our stock over and get our prices. We have many Evergreens not quoted above at reasonable prices. All our Evergreens are Balled and Burlaped.

FRUIT TREES

APPLE TREES. Standard size.

Nice large trees, 2 and 3 years old.

- BALDWINS. Standard red. Very heavy yielding. Fine quality.
- CORTLAND. The new late McIntosh. Fine quality. Good keeper.
- DELICIOUS. Early Winter, sweet, red. Best for eating out of hand.
- FALL PIPPIN. Large, green. Fine flavor.
- McINTOSH. Highest quality red. Late Fall.
- RED ASTRACHAN. Earliest red. Tart. Best for cooking.
- R. I. GREENING. Good for cooking.
- ROXBURY RUSSET. Dull green, rough skin. Late.
- STAYMAN'S WINESAP. Fine quality red Winter apple.
- YELLOW TRANSPARENT. Earliest green.

Per single tree, 95c; per 5 trees, assorted if you like for \$4.50 at the farm. Larger trees of some of the above kinds from \$1.00 to \$2.50 Each.

CHERRY TREES

Large 2 and 3-year-old trees. No. 1 grade 4 to 6 feet high.
BLACK TARTARIAN. Large black. Fine quality. Early.
BING. Late, dark red.
EARLY RICHMOND. The best sour cherry.
GOVERNOR WOOD. Large, early yellow.
NAPOLEON. Large, sweet, yellow, red cheek.
SCHMIDT'S BIGAREAU. Dark red. Early.

Large trees, Each \$1.00.

PEAR TREES

BARTLETT. Standard. Fine quality.
BUERRE ANJOU. One of the best. Late Winter.
CLAPP'S FAVORITE. Early, juicy. Large size.
KIEFFER. Vigorous and prolific. Late.
SECKEL. Small, very sweet.

All good No. 1 sized trees. Each, 85c; 5 for \$4.00.

PEACH TREES

No. 1 grade, large, healthy trees.

ADMIRAL DEWEY. Earliest yellow free-stone.
BELLE OF GEORGIA. White with red cheek. Prolific. Early.
CHAMPION. Best white. Extra quality. Early.
ELBERTA. Standard. Yellow. Very large. Fine.
NIAGARA. Quality yellow. Resistant to Leaf Curl.
SALBERTA. A late Elberta. Fine quality.
SOUTH HAVEN. Early, extra large. Free-stone. Yellow.

Fine stock, Each, 75c; per 5 trees assorted, \$3.50; Larger trees at \$1.00 Each.

PLUM TREES

ABUNDANCE. Large, fine fruit. Early.
BURBANK. Medium red. Early. Very prolific.
BRADSHAW. Early Purple. Sweet and juicy.
NIAGARA. Early Purple. Very productive.
REINE CLAUDE. Large, greenish. Vigorous.
SHROPSHIRE DAMSON. Late. Dark purple. Fine for canning.

Large trees, Each, 85c; per 5 trees, \$4.00.

ASSORTED TREES

APRICOT. Fine. Each, \$1.00.
QUINCE. Orange. XXX grade. Each, 90c.
CRAB APPLE. Transcendent, dark red, Each, 80c.
WALNUT, ENGLISH, 3 to 4 ft., Each, \$1.75.
WALNUT, JAPANESE. 6-7 ft., Each, \$1.75.

Can get you any kind of fruit tree that you might want, not listed above. Prices are all net at the Farm. Packing 20c per tree extra.

GRAPE VINES

The best kinds. Good two, three and four-year-old vines.

	Each
CACO. Red. Large, prolific	\$.60
FREDONIA. New early black. One of the best90
CONCORD. Most popular purple. Extra large plants, 50c.....	.25
DELAWARE. Red. Fine quality50
NIAGARA. Best white30
CATAWBA. Late, pink, sweet.....	.30
WORDEN. Early. Extra large plants. Purple.....	.50
BRIGHTON. Reddish purple. Early.....	.45
AGAWAM. Red, large sweet.....	.35
PORTLAND. New white. Sweet. Earliest of all.....	.50
SHERIDAN. Black. Later than Concord. Fine50

Add 10 cents extra for one vine sent by P. P.; 15c for three.

CURRENTS

- PERFECTION. A beautiful bright red. Price, 20c Each; \$2.00 per Doz.
- RED LAKE. New, large red. Finest of all. 25c Each; \$2.50 per Doz.

GOOSEBERRIES

- CHAUTAUQUA. New. Extra large. Fine quality. 35c Each.
- POORMAN. Largest red gooseberry grown. Fine quality. 25c Each; \$2.50 per Doz.

PLANT DEPARTMENT

STRAWBERRY PLANTS — Sterling Quality

My Strawberry Plants are raised on fresh ground, well fertilized and mulched. They are well rooted, healthy and true to name.

The Dorsett and Fairfax are unexcelled for quality and the Catskill is considered the best mid-season.

All plants are from a new bed. No old plants are ever sold by me.

	25	100	300	1000
PREMIER or HOWARD, No. 17. The best kind I have ever tried for market. Begins to ripen early; large, long red berries, and keeps right on through a long season and keeps its size and color well, right up to the end of the season	\$.25	\$.80	\$2.00	\$ 6.00
CLERMONT. A new early variety developed by the New York Experiment Station. From a cross between Marshal and Premier. Should be worthy of trial25	.80	2.25	
CULVER. A new midseason berry bred by the N. Y. Experiment Station. Fine red berry ..	.25	.80	2.25	

STRAWBERRY PLANTS—*Continued*

	25	100	300	1000
DORSETT. Bred by the U. S. Dept. of Agriculture in their efforts to get extra quality in a good shipping berry. This is a fine, heavy-yielding kind, comes a little later than Premier. Disease free, and a good plant maker..	.25	.80	2.25	6.00
FAIRFAX. Bred by the U. S. Dept. of Agriculture for quality, productiveness and size. Berries are very firm, dark colored, and unexcelled for home garden or market25	.80	2.25	6.00
CATSKILL. A new mid-season berry of good quality, large size and very productive25	.80	2.25	
NEW YORK. A large, very sweet berry. Heavy yielding, large foliage25	.80	2.10	
CHESAPEAKE. New stock grown on from Allen's special strain. Fine quality. Late25	.80	2.25	6.00
CAMDEN. A new late variety worthy of trial. Berries firm, good color25	.80		

Have tried to list the 9 kinds named above about in their order of ripening.

All kinds have perfect blossoms and can be set alone if desired.

EVERBEARING STRAWBERRY PLANTS

MASTODON. The largest and best Fall bearing berry we have tried yet. Very sweet berries. Heavy yielding.

Set the Fall Bearing plants this Spring, keep all blossoms pinched off until July and then thin the blossoms out 40% right through the rest of the season. You will then have good-sized berries of fine flavor right up to freezing weather and another crop the following Spring. Per Doz., 25c; per 100, \$1.50.

STRAWBERRY PLANTS IN AUGUST, SEPTEMBER AND OCTOBER.

We will have about all the kinds listed and some new kinds as well for Summer and Fall setting, from our new bed. New plants, well rooted and true to name. Write or ask for Fall Prices.

RED RASPBERRY PLANTS

We are trying new kinds every year in our endeavor to get kinds that will not get Mosaic and die out in a few years. We list some that are well worth trying.

NEWBURGH. A new red raspberry of superior merit. Has so far proven immune to Mosaic. It is of fine quality, early, productive, and holds its size through a long season. Each 10c; per Doz., \$1.00; 2 Doz., \$1.75.

CHIEF. A new early variety of fine quality and size. Disease free so far. Large 2 yr. old plants. Per Doz., 75c; per 2 Doz., \$1.25; per 100, \$5.00.

VIKING. Midseason, new. Large and hardy. Originated in Canada. Large 2 yr. old plants. Per Doz., 75c; per 2 Doz., \$1.25; per 100, \$5.00.

LATHAM. Large, late and disease resisting. Per Doz. 75c; per 2 Doz. \$1.25; per 100, \$4.00.

EVERBEARING RED RANIERE. Bears early and in the Fall. 2 yr. old. 75c per Doz.; 2 Doz., \$1.25; per 100, \$5.00.

BLACK CAP RASPBERRY PLANTS

NEW LOGAN BLACK CAP. Early, resistant to Mosaic and other diseases. Heavy yielding, large berries. Per Doz., 75c; per 2 Doz., \$1.25.

BLACK BEAUTY. Mid season.. Disease resistant. New, hardy, rank growing and prolific. Per Doz., 75c; per 2 Doz., \$1.25.

QUILLEN. Late. Resistant to Anthracnose, the worst foe of Black Caps. Medium to large berries of good quality. Worth trying. Per Doz., 75c; per 2 Doz., \$1.25.

POTOMAC. New. Large, purple. Fine. Very productive. Per Doz., 90c.

BLACKBERRY PLANTS

ALFRED. New, long, sweet berry. Early. Each 10c; per Doz. \$1.00.

YOUNGBERRIES. Heavy yielding. Large, sweet long berries. Low briar. Per Doz., 75c.

ASPARAGUS ROOTS

These roots are large, healthy, and ready to grow.

Doz. 100 1000

MARY WASHINGTON. One-year-old roots. From re-selected Pedigreed Seed. Prof. Norton claims this kind is the largest, most productive and finest flavored Asparagus yet developed. Very high branching, which makes it the best for cutting green. Rust-resistant\$.20 \$1.00 \$ 8.00

Set out Sterling Grown Roots this year, about six inches below the surface of the ground, cover with two inches of soil. As the plants grow up, fill trench with well-rotted manure and more soil, and some good garden fertilizer on top of that. Do not put fertilizer next to any kind of root or plant if you want them to live.

If properly taken care of you can cut your bed the following Spring until June 1st, letting it grow up after that and giving it more manure, feeding it well after letting it grow up.

HORSE RADISH

MALINER KREN. Best Kind. Per Doz. 25c; per 100, \$1.90.

RHUBARD ROOTS

OLD FASHIONED PIE PLANT. Large stalks with reddish tinge. Per root 10c; per Doz., 75c; per 3 Doz., \$2.00.

QUEEN. New. Strong, vigorous grower. Decided pink in color. Finest quality Each 10c; per Doz., \$1.00.

If you want Raspberry and Blackberry Plants, Horse Radish and Rhubarb Roots sent by Parcel Post add 12c to above prices for 1 Doz., 20c for 2 Doz. and 25c for 3 Doz. on Long Island.

RED ARROW SPRAY

Controls both sucking and chewing insects. Very efficient. 1 Oz. 35c, ¼ Lb. can \$1.00.

COLD FRAME PLANTS**CABBAGE PLANTS**

Hardy, Well-Rooted Plants re-rooted from Southern Plants.

	Doz.	100	1000
EXTRA EARLY JERSEY WAKEFIELD. Earliest pointed heads	\$.10	\$.60	\$4.50
EARLY CHARLESTON WAKEFIELD. Very large pointed heads10	.60	4.50
EARLY SUMMER. Large flat heads. These three make a fine succession.....	.10	.60	4.50

LETTUCE PLANTS

Transplanted, Large, Well-Rooted Plants

	Doz.	100
MIGNONETTE. Quick heading, good quality.....	\$.10	\$.70
NEW YORK or WONDERFUL. Large heads, quality....	.10	.70
BIG BOSTON. Sure heading. Fine.....	.10	.70
ICEBERG. Large solid heads.....	.10	.70

HOT BED PLANTS

Ready in May and June.

TOMATO PLANTS

Transplanted, well-hardened, stocky plants. Grown from the best strains of seed.

BREAK O' DAY. The best extra early.

PRITCHARD or SCARLET TOPPER. New, extra early. Fine.

RED HEAD. Bright scarlet fruit. Early; firm, large.

JOHN BAER. The most popular early sort. Large.

BONNY BEST. Very productive. Early. Globe shaped. .

PONDEROSA. Livingston's Improved Strain. Very large. Fine flavored. Best for slicing. Few seeds.

BEEFSTEAK or CRIMSON CUSHION. Large, fine.

MARGLOBE. Disease resistant. Large. Best for main crop.

LIVINGSTON'S STONE. One of the best for table, canning or market. Very solid, smooth and fine. Good shipper.

BURPEE'S MATCHLESS. Large, smooth. Bright red.

GOLDEN PONDEROSA. Large yellow. Sweet.

YELLOW PLUM. Small fruit for preserves. Round.

All kinds at one price. 25c per Doz.; 5 Doz. assorted kinds for \$1.00; \$1.50 per 100; \$10.00 per 1000.

Potted Plants in the early sorts. Large stocky plants. 5c Each; 55c per Doz.

Add 9c per Doz.; 12c per 2 Doz., and 25c per 100 to your order if you want them by Parcel Post.

CEDAR POSTS

We have in stock a large quantity of these valuable and long lived posts and can make you a good price on any quantity and size that you might need. Would be pleased to talk it over with you. Also plenty of small branches for Rustic work.

PEPPER PLANTS

Well Hardened. Strong Plants.

	Doz.	100
CALIFORNIA WONDER. New, thick. Sweet.....	\$.20	\$1.50
HARRIS' EARLY GIANT. Very large, productive, sweet	.20	1.50
NEAPOLITAN. Early, large and sweet. Prolific.....	.20	1.50
BURPEE'S RUBY KING. One of the sweetest, large....	.20	1.50
SWEETMEAT GLORY. Pointed, sweet. Thick-fleshed..	.20	1.50
CHINESE GIANT. Largest of all, most popular.....	.20	1.50
BURPEE'S NEW SUNNYBROOK. Sweet, small, thick	.20	1.50
LARGE BELL or BULL NOSE. Rather warm.....	.20	1.50
LONG RED CAYENNE. Hot. Very prolific.....	.20	1.50
CORAL GEM BOUQUET. Small, hot. Very ornamental.	.20	

Add 8 cents per dozen, 15 cents per 100 to the above prices if you want them sent by Parcel Post.

EGG PLANTS

Transplanted, Well Rooted and Hardened.

	Doz.	3 Doz.
IMPROVED NEW YORK SPINELESS. Large purple..	\$.30	\$.80
BURPEE'S BLACK BEAUTY. Large, early, prolific...	.30	.80

Add 9c per Doz., 15c per 3 Doz., if you want these plants sent by Parcel Post.

SWEET POTATO PLANTS

Ready in May and June.

	Doz.	100	1000
YELLOW JERSEY. Productive, early.....	\$.10	\$.70	\$6.00
RED JERSEY. Extra quality10	.70	6.00
PORTO RICO YAM. Large, fine for baking.....	.10	.70	6.00

Add 8 cents per Doz., 12 cents per 100, 20 cents per 300, 40 cents per 1,000 if you want these sent by Parcel Post.

FIELD GROWN PLANTS

Ready from June 20th to August 20th approximately.

All my plants are raised on fresh ground and the very best strains of seed are always used.

BRUSSELS SPROUT PLANTS

The seed is treated with hot water for Black Stem and Blackleg and you are thus assured of strong, healthy plants free from disease. Plants are raised on fresh ground from stock seed.

	Doz.	100	1000
STERLING STRAIN. Gives fine results on Long Island. Large and hard	\$.10	\$.60	\$4.00
LESLIE STRAIN. Fine hard, shiny Sprouts.....	.10	.60	4.00
BLUE RIBBON STRAIN. A very choice strain....	.10	.60	4.00

Price by the thousand liable to change, depending on the season.

CAULIFLOWER PLANTS

My seed is treated with the hot-water treatment, insuring against Black Stem, Blackleg and Blight. Plants raised on fresh, disease-free ground.

	Doz.	100	1000
STERLING LARGE EARLY ERFURT. Large, snow-white heads. One of the best for main crop. Sure heading	\$.15	\$.60	\$4.00

Price by the thousand liable to change without notice.

Use Corrosive Sublimate treatment for Maggots in your seed bed. Pour along the row as soon as you see signs of Maggot.



Use our Nicotine Dust for Aphis and Thrip.

CABBAGE PLANTS

This seed is treated with Semesan for Black Stem.

Plants are all grown from choicest seed procurable.

	Doz.	100	1000
ALL SEASON. Yellows resistant. Large, flat heads ..	\$.10	\$.50	\$3.00
EARLY FLAT DUTCH. Best for late setting.....	.10	.50	3.00
SAVOY. Long Island Special. Curled. Best quality...	.10	.60	4.00
LARGE LATE DRUMHEAD. Largest heads.....	.10	.50	3.00
LATE FLAT DUTCH. Solid, large heads.....	.10	.50	3.00
PENN STATE BALLHEAD. New. Fine10	.50	3.00
MAMMOTH ROCK RED. Sure heading. L. I. seed..	.10	.60	4.00

If you want any of the Brussels Sprout, Cauliflower or Cabbage Plants listed above sent by Parcel Post, add 8 cents per Doz., 15 cents per 100, and 8 cents for each additional 100, to above prices.

CELERY PLANTS

Ready in July and August. Transplanted, well rooted plants.

	Doz.	100	1000
FORDHOOK or EMPEROR. Burpee's Seed. Dwarf..	\$.10	\$.70	\$5.00
GOLDEN PLUME. Fine for second early or late10	.70	5.00
WHITE PLUME. Self blanching. Extra early.....	.10	.70	5.00
GIANT PASCAL. Tall Winter. Fine nutty flavor....	.10	.70	5.00
WINTER QUEEN. Stocky, very large, crisp.....	.10	.70	5.00

Add 8c per Doz., 12c per 100, and 8c for each additional 100 if you want these sent by Parcel Post.

Have early transplanted plants in above kinds at 15c per Doz.; 80c per 100.

MAGGOT CONTROL

You can raise fine Cabbage without damage from Maggots if you will follow the directions given below:

Add 1 Oz. Corrosive Sublimate to 8 gallons water. Put ½ cupful to each plant once a week. Begin to do this in May or as soon as you see the Maggot fly.

INSECTICIDES, SPRAY MATERIAL and SUPPLIES**ARSENATE OF LEAD***Prices liable to change without notice*

"Corona Dry" Arsenate of Lead. This is one of the best kinds, very fine, sticks well on the foliage and kills the bugs clean and quick.

	Per Lb.
1 to 3 Lb.	\$.18
4 Lb. Pkg.....	.15
Case of twelve 4-Lb. Pkgs.....	.12

The above prices are net cash. Time price, 1c per Lb. extra. Price liable to change without notice.

CALCIUM ARSENATE

Corona Calsenate

A light, fluffy powder, stronger and keeps in solution better than Arsenate of Lead but does not stick so well in rainy weather.

	Per Lb.
1 to 3 Lbs.....	\$.15
4 Lb. Pkg.....	.10
Case of eight 4-Lb. Pkgs.....	.09

Prices net cash. Time price, 1c per Lb. extra.

BORDEAUX MIXTURE

Corona Dry Bordeaux contains not less than 13% Copper. The best control for Blights and Fungi. Full directions for its use on the box.

	Per Lb.
1 to 3 Lb.....	\$.18
4 Lb. Pkg.....	.15
Case of eight 4-Lb. Pkgs.....	.12

All prices net cash. Time price, 1c per Lb. extra.

MAGNESIUM ARSENATE

The best poison for Mexican Bean Beetle. Use 4 Lbs. to 100 Gals. water and spray underside the leaves. Per Lb., 30c; 4 Lbs. for \$1.00; 50 Lb. drum, price on request. Use 2 Lbs. Kayso and 5 Lbs. lime with 4 to 5 Lbs. Magnesium Arsenate to 100 Gals. of water.

PYRETHRUM DUST

Have a good supply of this Improved Dust for killing cabbage worms, bean beetles, etc. Priced right.

TREE TANGLEFOOT

Best for banding trees to control the Canker Worm that eats the leaves off your oak trees. 1 Lb. cans 60c Each; 5 Lb. cans \$3.00 Each; 10 Lb. cans \$5.50 Each.

LIME SULPHUR DRY

One of the best remedies for Leaf Curl and most all of the Fungus disorders. Mix from 15 to 25 Lbs. to 45 Gals. water for dormant spray. 5 to 8 Lbs. for a good Summer spray.

	Per Lb.
1 to 4 Lbs.....	\$.20
5 to 10 Lbs.....	.15
12½ Lb. Bags.....	.13
100 Lb. Drums 8-12½ Lb. Bags.....	.12

All prices net cash. Time price, 1c per Lb. extra.

MONOHYDRATED COPPER DUST

A dry powdered Blue Vitriol. Use as a Dust for control of Bean Beetle, mixing 5 Lbs. Copper Dust, 15 Lbs. Lime and 1 Lb. Magnesium Arsenate. Per Lb., 15c; per 10 Lbs. or more, 12c per Lb.

LIQUID LIME SULPHUR

This is sometimes used in preference to the dry form. The very best, Grasselli Brand. For Leaf Curl on Peaches use 6½ Gals. Liquid Lime Sulphur to 100 Gals. water when dormant.

	Per Gal.
Per Gal. at the Farm, bring your own container.....	\$.40
Per 10 Gal. at the Farm, bring your own container.....	.35
Per 50 Gal. drum, F.O.B. N. J.....	.20

SPRAYING LIME

A fine quality lime. Packed in 50 Lb. bags, 60c per bag; \$5.50 per 10 bags.

SPRAY PUMPS

Have a stock of these handy Sprayers listed below on hand and can get you any kind or size you might want on very short notice. Send for catalog.

HAND SPRAYERS

Galvanized Condensed Air Sprayers. Nicely made. Long hose, good nozzle. Holds 3 Gal. Price on application.

BRASS SPRAYER

One of the best on the market. Easily filled. Full brass. Long hose, extension rod, good nozzle. Holds 3 Gals. Price on application.



Best for Mites, Lice and Germs

Carbola is a white paint and powerful disinfectant combined in powder form. Just mix with water and you have a smooth-flowing disinfecting paint. No waiting or straining. Does not flake or peel off. One pound covers 100 square feet.

Apply Carbola to the interiors of your poultry houses, dairy barns, hog pens and outbuildings. Apply it to every surface that might harbor lice, mites and disease germs. It is live stock insurance against tuberculosis, foot and mouth, hog flue and other destructive diseases. Try it. Satisfaction guaranteed.

5 Lbs....	\$.60	25 Lbs....	\$ 1.90
10 Lbs....	.98	50 Lbs....	3.50

2% NICOTINE DUST

The dry powdered Nicotine Sulphate. Dust it on in the heat of the day and it forms a gas and will kill all insects, if thoroughly applied. Per Lb., 20c; 5 Lbs. or more at 18c per Lb.; 50 Lb. drums at 16c per Lb.

TOBACCO DUST

Fine ground. Used for dusting plants for Aphis, Thrip and Fleas, Hen's Nests, etc. Per Lb., 10c; per 10 Lbs., 80c; per 100 Lb. bag, \$6.00.

SULFOCID

A Better Summer Spray

- 1 5-Gal. can in case..... \$7.50
- 1 Gal. can in case..... 2.25
- 1 Qt. can85
- 1 Pt. can50

Freight paid to any R. R. station on Long Island on orders of 5 gallons or over.

Sulfocide is a powerful summer fungicide—at low cost—for fruits, vegetables and flowers. When sprayed, it quickly decomposes, leaving a film of sulfur so fine as to be almost invisible except where drops accumulate.

1 Qt. makes 50 Gals. of spray.
1 Gal. makes 200 Gals. of spray.
Add 1/2 Lb. Kayso to each 50 Gals. of spray, putting it in the tank first.



SCALECID

THE COMPLETE DORMANT SPRAY

"Makes a Tree Outgrow Its Troubles"

Fall spraying with Scalecide controls psylla and peach leaf curl. Spring application controls aphid, pear thrips, leaf miner, case bearer and leaf roller. Either fall or spring spraying with Scalecide controls scale, bud moth, European red mite, fungus or blight cankers from which are spread fire blight, collar rot and root rot. And in addition, year after year use of Scalecide invigorates the trees.

Ask for Booklet

- 50-Gal. Bbl. (freight paid to any R.R. station on Long Island) \$23.50
- 15-Gal. Drums (freight paid to any R.R. station on Long Island) 10.00
- Drums \$3.00 extra, but returnable at same price. F.O.B. Hackensack, N. J.

- 1 Gal. can, at the Farm..... \$1.40
- 1 Qt. can, at the Farm..... .60
- Per Gal. at the Farm; bring your own containers..... .75

ROTENONE DUST

The new non-poisonous dust for dusting Cauliflower, Brussels Sprouts and Lima Beans when near to maturity, leaving no illegal residue. Sulphur controls fungus diseases.

- 1/2 of 1% Rotenone, per 25 Lb. Bag Price on application
- 3/4 of 1% Rotenone, 25% fine dusting sulphur, per 25 Lb. Bag
Price on application

KAYSO

Use KAYSO in All Your Sprays for All Spraying.

KAYSO makes the spray spread in an even, unbroken coat over every surface, thereby giving better control of pests and diseases. Price: Per Lb., 25c; per 2 Lb. Pkg., 45c; 24 2-Lb. Pkgs., packed in box, 40c per Pkg.

TRI-OGEN

A complete Insecticide and Fungicide for Roses, Hollyhocks, Hardy Phlox, Delphinium, Chrysanthemum, etc. A, Small Kit makes 16 qts., \$1.50; B, Medium Kit makes 64 qts., \$4.00; C, Large Kit makes 32 gals., \$6.00.

The Liquid Spray that controls Plant Lice or Aphis. Put 1/2 Lb. to 50 Gals. water, add 6 to 8 Ozs. of Kayso, and you have one of the best controls there is for sucking insects.



Per 1 Oz. Bottle, for garden use.....	\$.35
Per 5 Oz. Bottle	1.00
Per 1 Lb. Bottle	2.25
Per 2 Lb. Tin	3.25
Per 5 Lb. Tin	5.50
Per 10 Lb. Tin	9.90

Special price on larger quantities.

Black Leaf 40 is the greatest louse killer for poultry on the market. Pour it on the perches just before roosting time.

INSECTICIDES

C.C.C. RAT AND MOUSE KILLER. They die outside. Per can, 50c.

C.C.C. LOUSE POWDER for dusting all kinds of animals for lice, fleas, etc. Per large sifter can, 50c.


FUNGTROGEN. Best spray for Black Spot and Mildew on Roses. Pt. \$1.25; Qt. \$2.00.

GRAPE and ROSE DUST. Prevents Mildew and Black Spot. This ideal dusting fungicide is easy and safe to use. Green in color, not unsightly. Colloidal sulphur base, combined with other fungicides. 1 Lb. can 35c.

HAMMOND'S NO-CROW. Drives birds away from your corn. 1/2 Pt. can, 60c; 1 Pt. can, \$1.00. 1/2 Pt. can will treat 1 Bu. of corn.

MOLOGEN. One of the best remedies for moles and mice. Per can, 50c; large can, \$1.25.

SLUG SHOT. Dust it on your plants for all chewing insects. Sifter top 1 Lb. can 25c. 5 Lb. can \$1.00.



CUPROCIDE
The Red Copper Oxide That Stays Red
**PROTECTS YOUR SEEDS
FROM
"DAMPING-OFF"**

1 lb. CAN 90c



INSECTICIDES—*Continued*

SEMESAN, JR. New Improved. For dusting Seed and Sweet Corn. 4 Oz. can, 35c; 1 Lb. can, \$1.00; 5 Lb. can, \$4.75.

SEMESAN. For disinfecting seeds, bulbs, soil, etc. Kill disease spores. 2 Oz., 35c; 1 Lb., \$2.25; 5 Lbs., \$9.90.

We have other Insecticides, Weed Killer, Fly Spray, etc. Look our stock over.

FINE GROUND SULPHUR

For dusting Potatoes, spraying and spreading on the land for Potato Scab, dusting Evergreens for Red Spider, etc.

Excelsior Brand Sublimed Velvet Flowers of Sulphur 100% pure. 1 to 4 Lbs. 10c per Lb.; 5 to 99 Lbs. 8c per Lb.; 100 Lb. Bags \$6.50.

Superfine Commercial Dusting Sulphur 99% pure. 100 Lb. Bags \$4.50.

HYLITE

A fine Inside Paint at 75c per Gal.

A new cold water paint for inside work. Does not rub off. Can be painted, sprayed or stippled. Comes white and can be colored any desired color. 5 Lbs. makes 1 Gal. of paint. 5 Lbs. any color desired for 75c; 50 Lbs. at 10c per Lb. Colors to suit with each 5 Lbs.

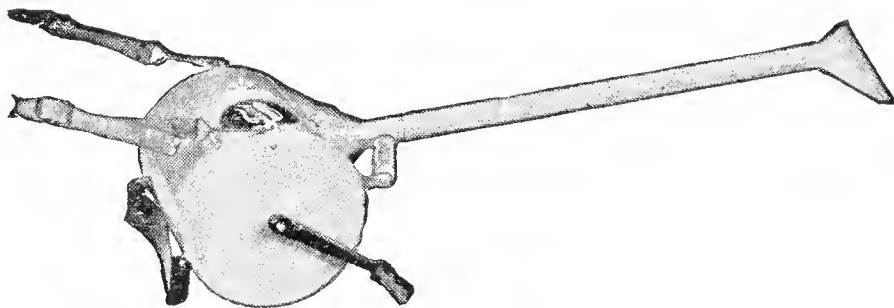
WOODEN LABELS (Painted)

	100	1000
4-inch Pot Label	\$.35	\$2.25
3½-inch Copper Wired50	3.25
12-inch Garden Label, per Doz., 20c.....	1.50	

EARTHEN FLOWER POTS

	Each
3-inch	\$.04
4-inch06
5-inch08
8-inch20
9-inch28
10-inch38
Hanging Baskets, with chain.....	.35

THE FEENY HAND DUSTER



The most comfortable to carry and the easiest to operate. The feed is accurate and may be set for any dosage from less than a pound to 15 Lbs. or more to the acre. Price with Bean Beetle nozzles and flexible connection, \$15.00 Each.

THE FEENY D 2-QUART DUSTER

This hand duster is 50 inches long, has a flared nozzle for general use and a special nozzle for the Mexican Bean Beetle. \$2.50 Each.

PRICES—We have kept our prices down to last year's levels or lower on all lines where it could be done, along with our policy of high quality. Remember, when comparing our prices with others that we always strive to put out the highest quality in all our products.



Hurricane Hall in its setting of old trees.

REAL ESTATE DEPARTMENT

I have many very choice lots, plots, houses, bungalows and farms to sell and can give you as good or better value for your money as can be secured anywhere, when you consider location, nearness to bays and creeks where the fishing, crabbing, clamming, boating and bathing are unexcelled. If you want proof of the attractiveness of this location ask some of the people who have bought of me. I will be pleased to furnish anyone interested with their names and addresses.

NASSAU FARMS

A 60-acre development of my own, overlooking Little and Great Peconic Bays and lying between Baldwin's Creek on the west and Little Creek on the east. I have many beautiful lots bordering these creeks or with free access to them and to the bay.

There are 16 nice homes already built at Nassau Farms and several more contemplated in the Spring.

Lots on the water average about 70 ft. in frontage and about 250 ft. deep and are priced very reasonable.

Lots facing on Pine Tree Road and Sterling Road are good sized lots and priced at lower figures.

A 7½-acre tract with a large pond on it with island and bridge, windmill with running brook and pool, stone fireplace, in the natural setting of oaks and cedars.

A 4-acre plot with 200 ft. frontage on Baldwin's Creek and wide frontage on Bay Avenue would make a wonderful estate. Large trees.

A 5-acre plot with 70 ft. frontage on road and 20 ft. on creek.

All priced at very reasonable prices.

A large map showing location, size and price of all the above lots and plots can be had for the asking. Write for one.

HURRICANE HALL

The old Horton House, built over 200 years ago, has been remodeled and is ready for occupancy.

The house contains kitchen, pantry, dining room, living room, lavatory, entrance hall and many closets downstairs, and three bedrooms with large closets and a bathroom upstairs. All the rooms are bright, attractive and cool in the summer. A screened-in porth on the south side overlooking the water.

There is a cellar equipped with electric pump, pressure tank, hot water tank and stove. The house is wired for electricity. A large stone fireplace is in the living room.

Would be pleased to show anyone who is interested through the house.

This house can be bought with from $\frac{1}{2}$ acre of land up to 6 acres as desired with little or much water front. Will *rent* if unsold.

STERLING INLET

Three large lots at Nassau Point Nos. 224-225-226. These lots front on Wunnewetta Pond and from there into Peconic Bay. Each lot has over 100 ft. frontage on the water and a depth of over 300 ft. Covered with oak trees and a small pond in the center of the plot. This could be landscaped and made into one of the finest spots on Nassau Point. There is a shell road through the center of the plot. Priced very reasonable. Good terms can be arranged. The three lots to be sold in one large plot only, not separate.

CARRINGTON PARK

Four large lots at Nassau Point, each having more than 100 ft. frontage on Little Peconic Bay Road. These lots are well wooded, high and cool and are only a few feet from a road leading directly to Wunnewetta Pond. Here is a good harbor for boats and a direct channel to Peconic Bay.

The road leading to the Cove is very near here where there is very good bathing and boating.

The first lot sold at Carrington Park will be priced at \$1000.00. Now is your chance to pick up a good lot in a restricted neighborhood for little money. Terms to suit.

BRIAR PATCH

Lots as low as \$250.00 each in this development on Eugene's Creek. Other lots on Harbor Road at \$400.00 to \$600.00.

Would be pleased to show anyone interested in any of the above described lots, and convince you that you can get full value for your money when you purchase of me.

OTHER LISTINGS

I have a Real Estate Broker's license and have many fine properties listed for sale and for rent.

Water front lots on the Bay, Sound and Creeks, some with attractive houses on them. Also acreage, farms, both large and small. Let me know your needs.

A few of the properties I have listed for sale:-

Bungalow on the water at Nassau Point, 6 rooms and bath. Electricity, fireplace, fine view. Cool. Priced right for sale or rent.

New Bungalow at Nassau Farms, 6 bedrooms, kitchen, dining room, large living room and bath. Fireplace, electricity, fine view, faces south, always cool. Only a few steps to the best bathing beach. Priced very

reasonable. This bungalow has 100 ft. frontage on Bay Ave. and 200 ft. depth. If you want a fine house with a large lot, here is your chance to get one right. Nicely wooded. Price goes up March 1st.

House at Fleet's Neck. Newly remodeled. Kitchen, living room, two bedrooms and bath. Large porch with fine view. Good frontage on the water. Faces northwest.

Two large houses on New Suffolk Lane. Suitable for taking lodgers or boarders. New Suffolk is headquarters for the fishermen in Spring and Summer. Bargain prices on these.

40-acre Farm. Good soil, good buildings, wide frontage on Route 25 and another town road. Priced right.

25-acre Potato Farm. 18 acres good potato land, some wood land. Large house and barn. Priced at about \$320.00 per acre. Good terms.

22-acre Potato Farm. All good soil. Wide frontage on Town road. New house with 6 rooms and bath. Good barn. Priced reasonable.

470 ft on L. I. Sound. Will sell in part or whole piece. Wonderful view. Priced at \$20.00 per ft.

Bungalow on Deep Hole Creek, Mattituck. 4 rooms and bath. Large screened porch. Electric lights. Good channel to Peconic Bay. Price and terms reasonable.

17 acres on Route 25. Wide frontage, large house, barn and other outbuildings. Priced reasonable.

40-acre Farm with wide frontage on Middle Road at Cutchogue. Fine potato farm.

35-acre farm at Jamesport. Fronts on Route 25. Large house and barn.

12-acre Farm at Peconic. New house, barn and garage. Good potato soil.

6 water front lots at Nassau Point on Peconic Bay priced to sell. Some on East Bay and some on the West Bay. Only a few lots on the bay left.

8 lots, heavily wooded, on Nassau Point Road. Cheap.

100 ft. on Peconic Bay at Indian Neck. Over 1200 feet deep. Well wooded.

3 large lots at Nassau Point. Priced to sell. The three lots for \$1500.00, or \$550.00 each.

40-acre Farm at Southold. Wide frontage on the water.

Have other farms and properties listed. Would be pleased to receive your inquiries when in the market.

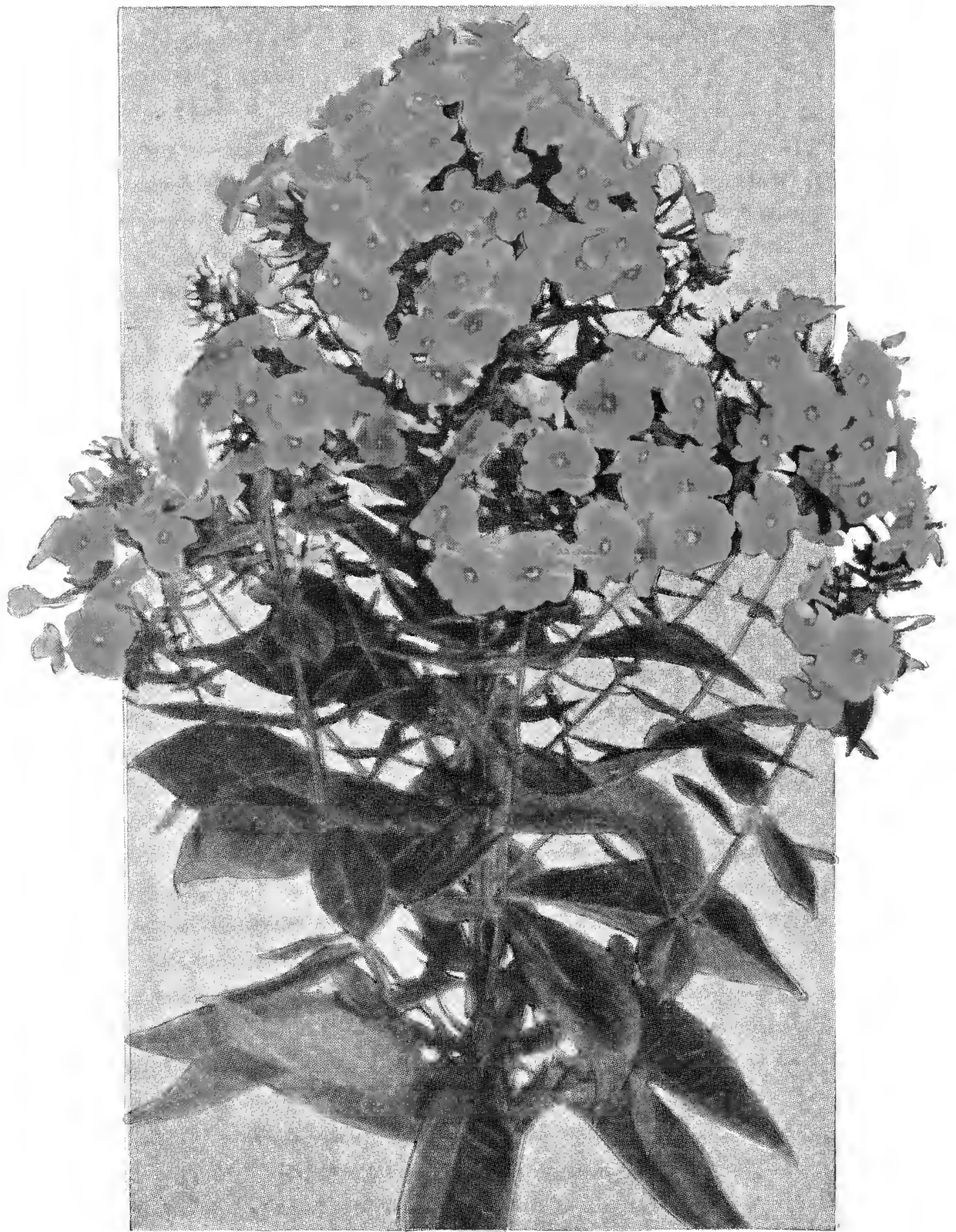
3 acres at Southold. Large house, good outbuildings. 160 feet on Route 25. Priced at \$6000.00. Terms.

FIREPLACE WOOD

Oak and pine wood sawed in 2-foot lengths suitable for your fireplace. Ask us for prices.

R. C. RHODE ISLAND REDS

We have a pen of 10 hens and a rooster from one of the best laying strains in Mass. The hens have all been trapnested in their pullet year and laid over 200 eggs each. The cockerel is from a very heavy laying trapnested hen and is line bred. Chicks from this pen should make good layers. Eggs priced at \$1.50 for 15 eggs.



© 1936

THE NEW TIGRESS HARDY PHLOX

Patented. 50c each. See page 36.

Address all communications and make all checks
and money orders payable to

RALPH W. STERLING

CUTCHOGUE, L. I., (Suffolk County) N. Y.

Telephone Peconic 55

No Business Done on Sunday

Harry Lee Publishing Co., Inc., Riverhead, N. Y.